

PROVIDENCE, R.I.
CITY ENGINEER'S OFFICE

STREET LINE DEPT.

Oct. 7, 1914

040428

PLAT OF NIAGARA STREET

FROM ADELAIDE AVE. TO ATLANTIC AVE.

SCALE 50 FEET PER INCH.

DECLARED A PUBLIC HIGHWAY

BY RESOLUTION OF THE

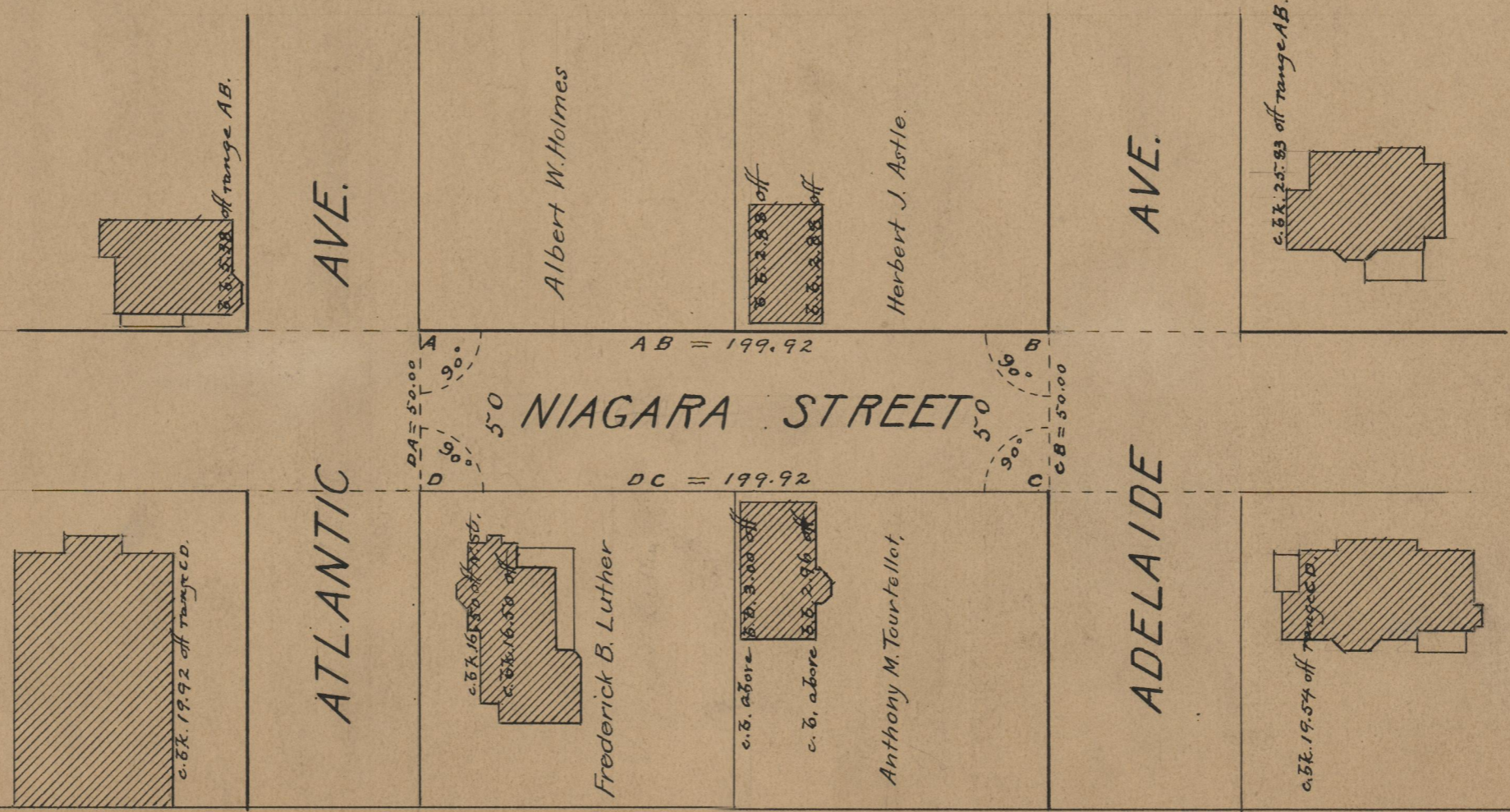
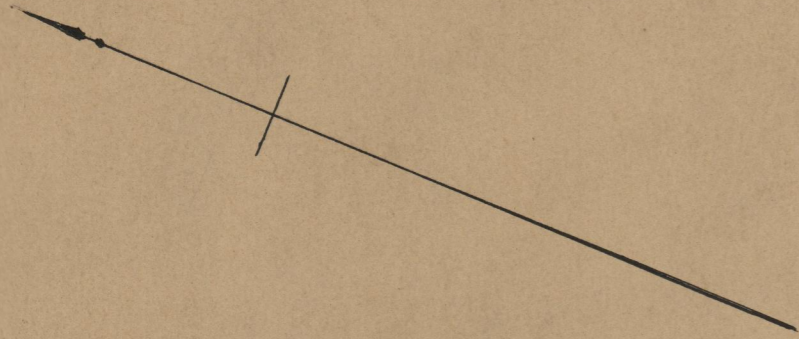
BOARD OF ALDERMEN,

September 10, 1914

199.92

Note, The area declared a public highway is indicated by the letters ABCD.
The lines thus fixed conform to the deeds recorded in Deed Book 211, page 492, and Deed Book 543, page 353, in the office of the Recorder of Deeds.

Witness, _____
City Clerk.



OFFICE No.	19387
DRAWER	74
SHEET	A-38