

PROVIDENCE, R.I.
CITY ENGINEER'S OFFICE
STREET LINE DEPT.

Oct. 14, 1914

040455

PLAT OF ELEVENTH STREET

FROM TOP ST. TO HOPE ST.
SCALE 60 FEET PER INCH.

DECLARED A PUBLIC HIGHWAY
BY RESOLUTION OF THE
BOARD OF ALDERMEN,

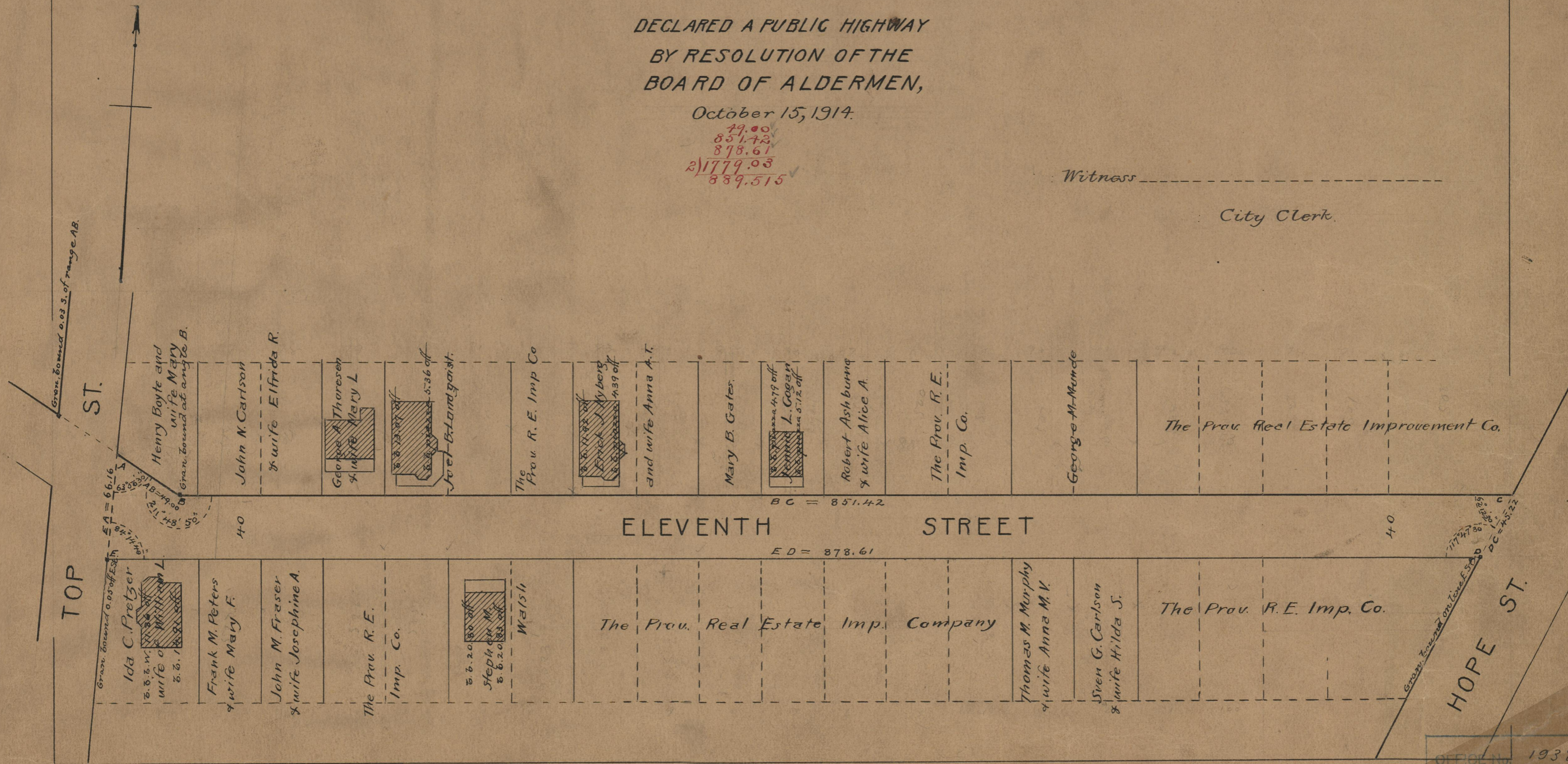
October 15, 1914.

29.00
851.42
878.61
2)1779.03
889.515

Witness _____

City Clerk.

Note, The area declared a public highway
is indicated by the letters ABCDE.
The lines thus fixed conform to the
deed recorded in Deed Book 515, page 340,
in the office of the Recorder of Deeds.



OFFICE NO. 19385
DRAWN BY 74
SHEET A-37

74
A37