

PROVIDENCE, R.I.
CITY ENGINEER'S OFFICE
STREET LINE DEPT.

Nov. 12, 1914

940507

PLAT OF FARRAGUT AVENUE

FROM BROAD ST. TO ROGER WILLIAMS PARK

SCALE 60 FEET PER INCH.

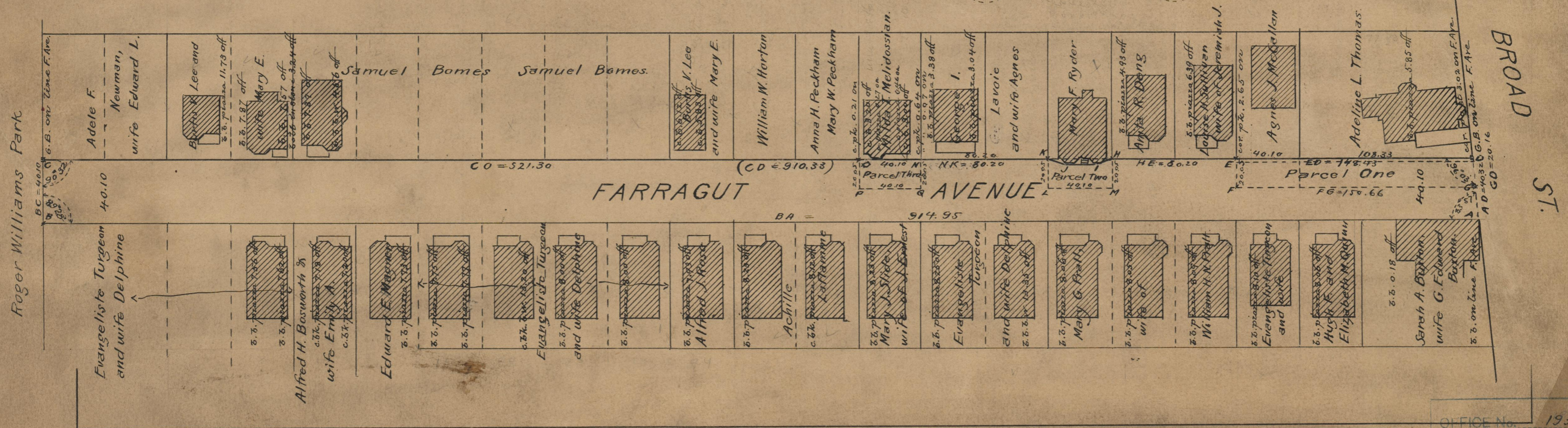
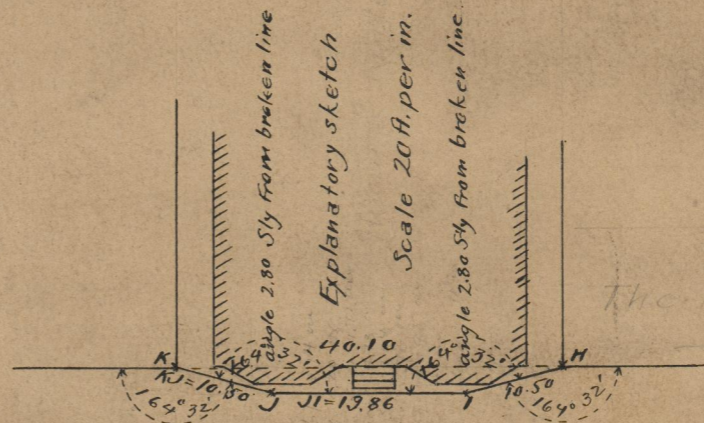
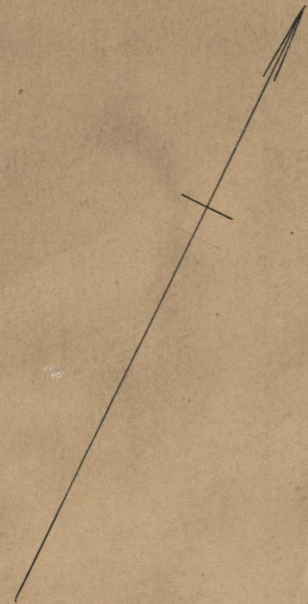
Parcels one, two and three, as shown hereon, were laid out by a committee appointed by the Board of Aldermen.

The irregular parcel indicated by the letters ABCOPQNKLMHEFGA was declared a Public Highway by resolution of the Board of Aldermen, passed March 18, 1915.

Witness, _____
City Clerk.

910.33
914.95
21825.28
912.64

Note, The lines of the portion of Farragut avenue declared a public highway by the Board of Aldermen and as represented hereon, conform to the deeds recorded in Deed Book 409, page 495, Deed Book 543, pages 205, 234-5, 244, 254, 263, 273, 296 and 313, and Deed Book 544, pages 198 and 234 in the office of the Recorder of Deeds.



OFFICE No. 19385
DRAWER 74
SHEET A-36