

PLAT OF
COLE AVENUE
FROM PRESIDENT AVE. TO SESSIONS ST.
IN THREE SHEETS
SCALE 60 FEET PER INCH.

PROVIDENCE, R.I.
CITY ENGINEER'S OFFICE
STREET LINE DEPT.

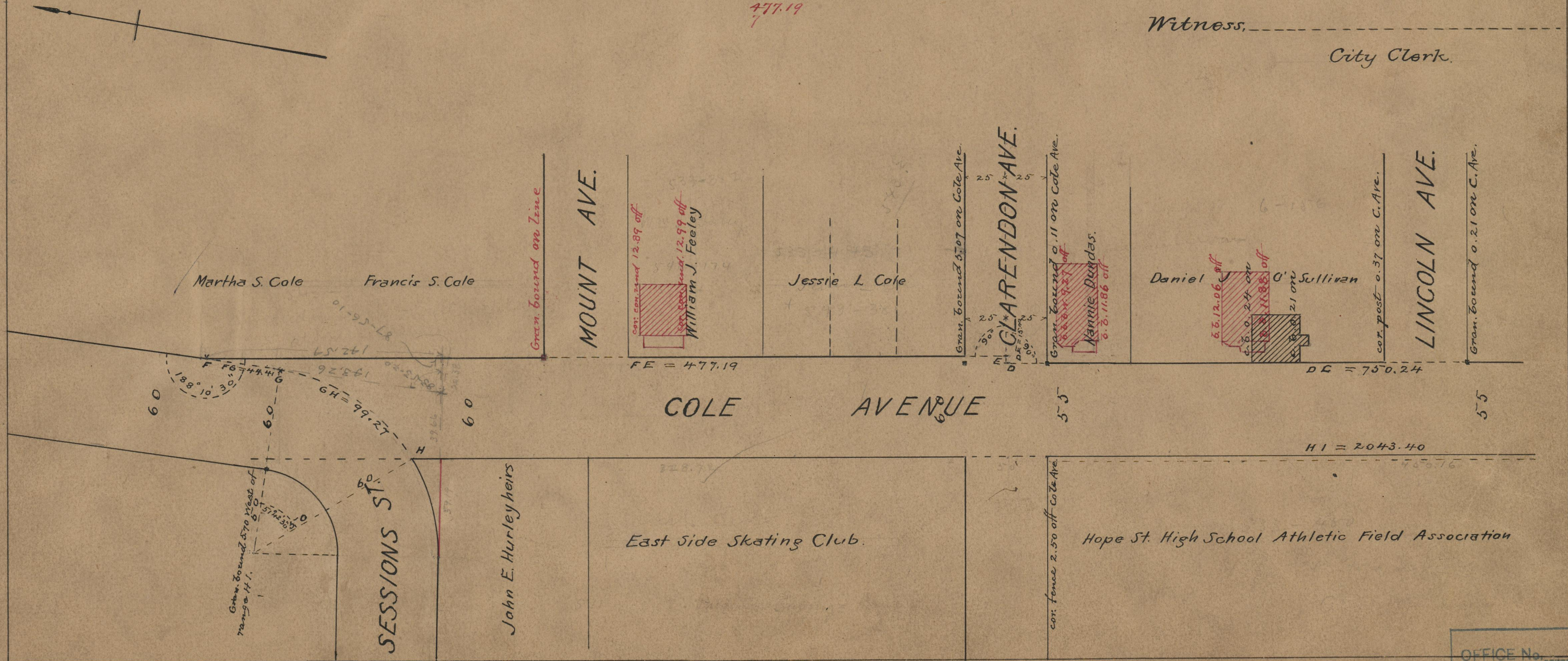
Nov. 12, 1914

040512

*Declared a Public Highway
by resolution of the
Board of Aldermen
October 15, 1914.*

477.19

Witness, _____
City Clerk.



74
A-33

OFFICE No.	19382
DRAWER	74
SHEET	A-33