

PROVIDENCE, R.I.
CITY ENGINEER'S OFFICE
STREET LINE DEPT.

Nov. 12, 1914

040510

PLAT OF COLE AVENUE

FROM PRESIDENT AVE. TO SESSIONS ST.

IN THREE SHEETS

SCALE 60 FEET PER INCH.

Declared a Public Highway
by resolution of the
Board of Aldermen

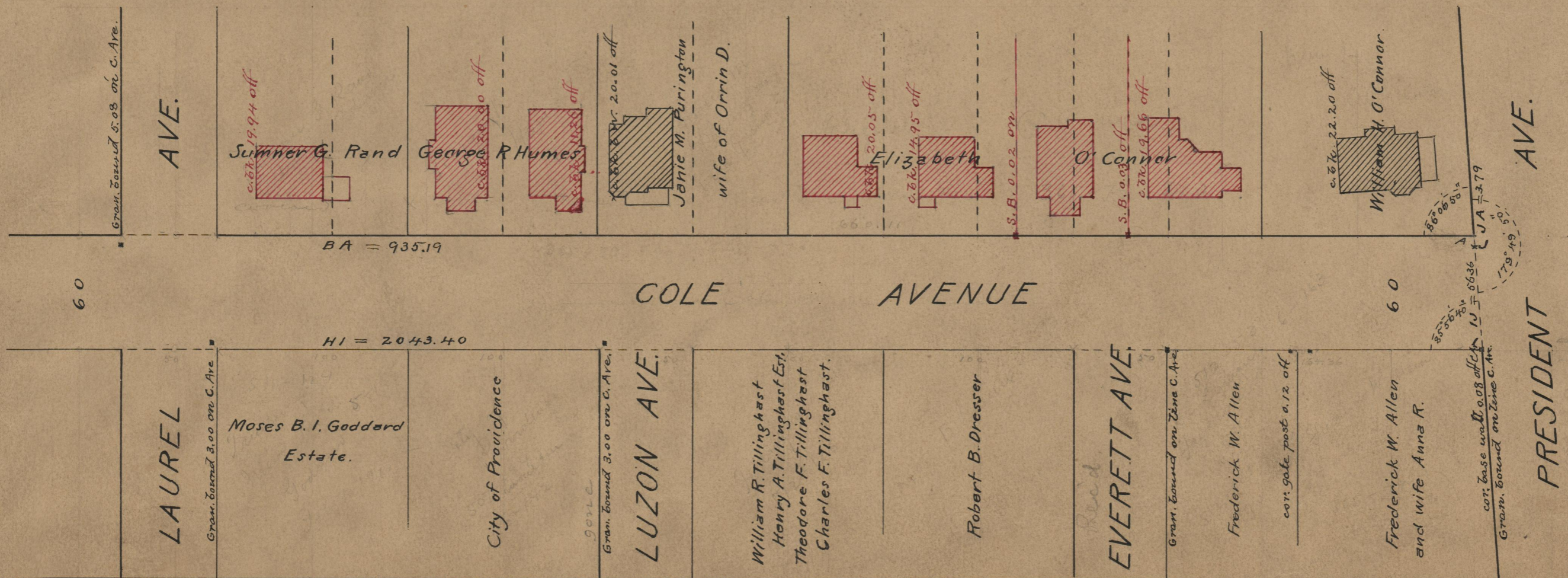
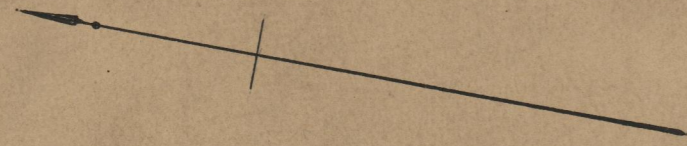
October 15, 1914.

935.19
750.24
477.19
2043.40
27206.02
2103.01

Witness. -----

City Clerk.

Note, The area declared a public highway is indicated by the letters A B C D E F G H I J A.
The lines thus fixed conform to the deeds recorded in Deed Book 187, page 447, Deed Book 365, pages 79 and 270, Deed Book 507, page 194, Deed Book 571, pages 124, 155 and 207, Deed Book 512, pages 53, 126 and 181, Deed Book 533, pages 382, 443, and 450, Deed Book 536, page 66, Deed Book 543, pages 269, 339, 380 and 381, Deed Book 546, pages 171 and 174, in the office of the Recorder of Deeds



OFFICE No. 19380
DRAWER,, 74
SHEET,, A-31