

PROVIDENCE, R.I.
CITY ENGINEER'S OFFICE
STREET LINE DEPT.
Nov. 12, 1914

Note: The area declared a public highway is indicated by the letters ABCDEF.
The lines thus fixed conform to the deeds recorded in Deed Book 406, page 153, Deed Book 486, page 379, Deed Book 511, page 124, Deed Book 525, page 183, Deed Book 535, page 368 and Deed Book 536, page 84 in the office of the Recorder of Deeds.

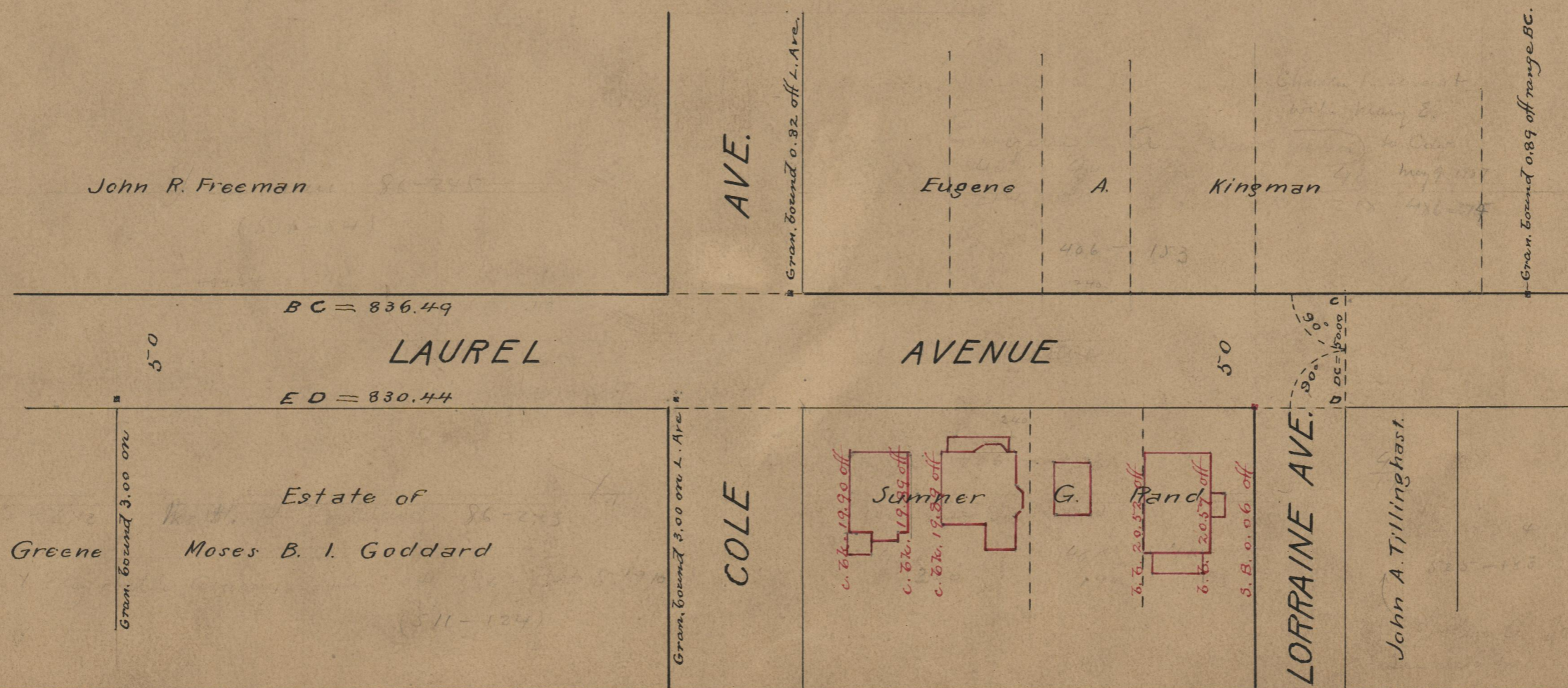
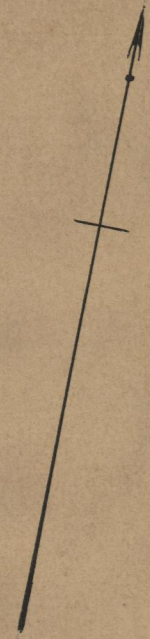
PLAT OF
LAUREL AVENUE
FROM ELMGROVE AVE. TO E'LY LINE OF LORRAINE AVE.
IN TWO SHEETS
SCALE 60 FEET PER INCH.

040509

DECLARED A PUBLIC HIGHWAY
BY RESOLUTION OF THE
BOARD OF ALDERMEN
October 15, 1914.

Witness, -----

City Clerk.



OFFICE No. 19379
DRAWER, 74
SHEET, A-30