

PROVIDENCE, R.I.  
CITY ENGINEER'S OFFICE  
STREET LINE DEPT.

Nov. 12, 1914

040508

PLAT OF  
**LAUREL AVENUE**  
FROM ELMGROVE AVE. TO E'LY LINE OF LORRAINE AVE.  
IN TWO SHEETS  
SCALE 60 FEET PER INCH.

DECLARED A PUBLIC HIGHWAY  
BY RESOLUTION OF THE  
BOARD OF ALDERMEN

October 15, 1914.

Note: The area declared a public highway is indicated by the letters A B C D E F.

The lines thus fixed conform to the deeds recorded in Deed Book 406, page 153, Deed Book 486, page 374, Deed Book 511, page 124, Deed Book 525, page 183, Deed Book 535, page 368, and Deed Book 536, page 84, in the office of the Recorder of Deeds

Red notes indicate proposed change in lay out  
Radii are from Freeman Plat. Location of bounds from measurements by F.B. Bourne and calculations by H.E. Sherman

735.12  
836.49  
830.44  
740.23  
213542.28  
1271.14  
60  
1271.14

Witness

City Clerk.

John R. Freeman

AVENUE

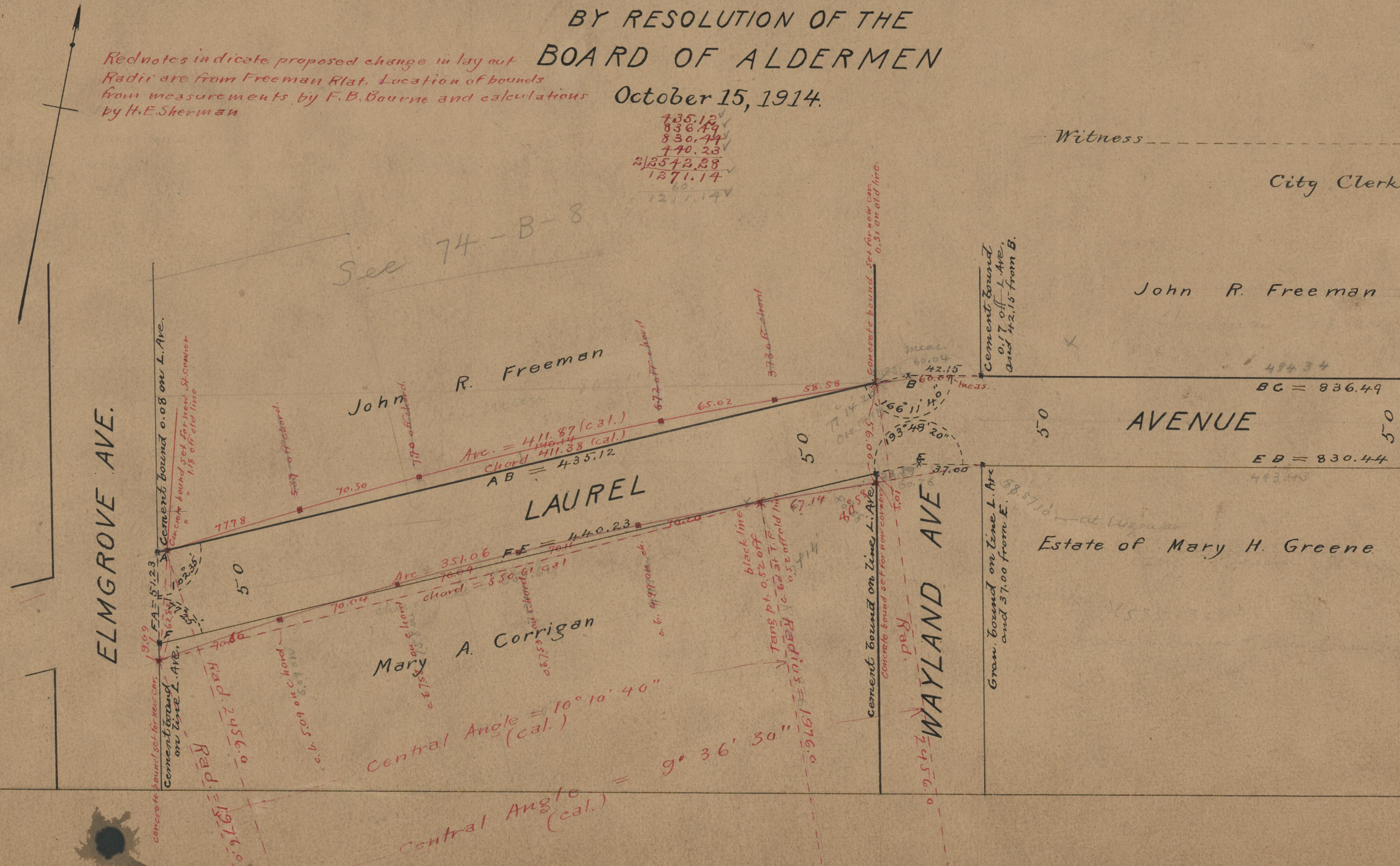
BC = 836.49

ED = 830.44

Estate of Mary H. Greene

Gran. Bound 3.00 ft

Estate of  
Moses B. I. Goddard



74  
A-29

OFFICE No. 19378  
DRAWER " 74  
SHEET " A-