

PROVIDENCE, R.I.  
CITY ENGINEER'S OFFICE  
STREET LINE DEPT.  
Oct. 7, 1914

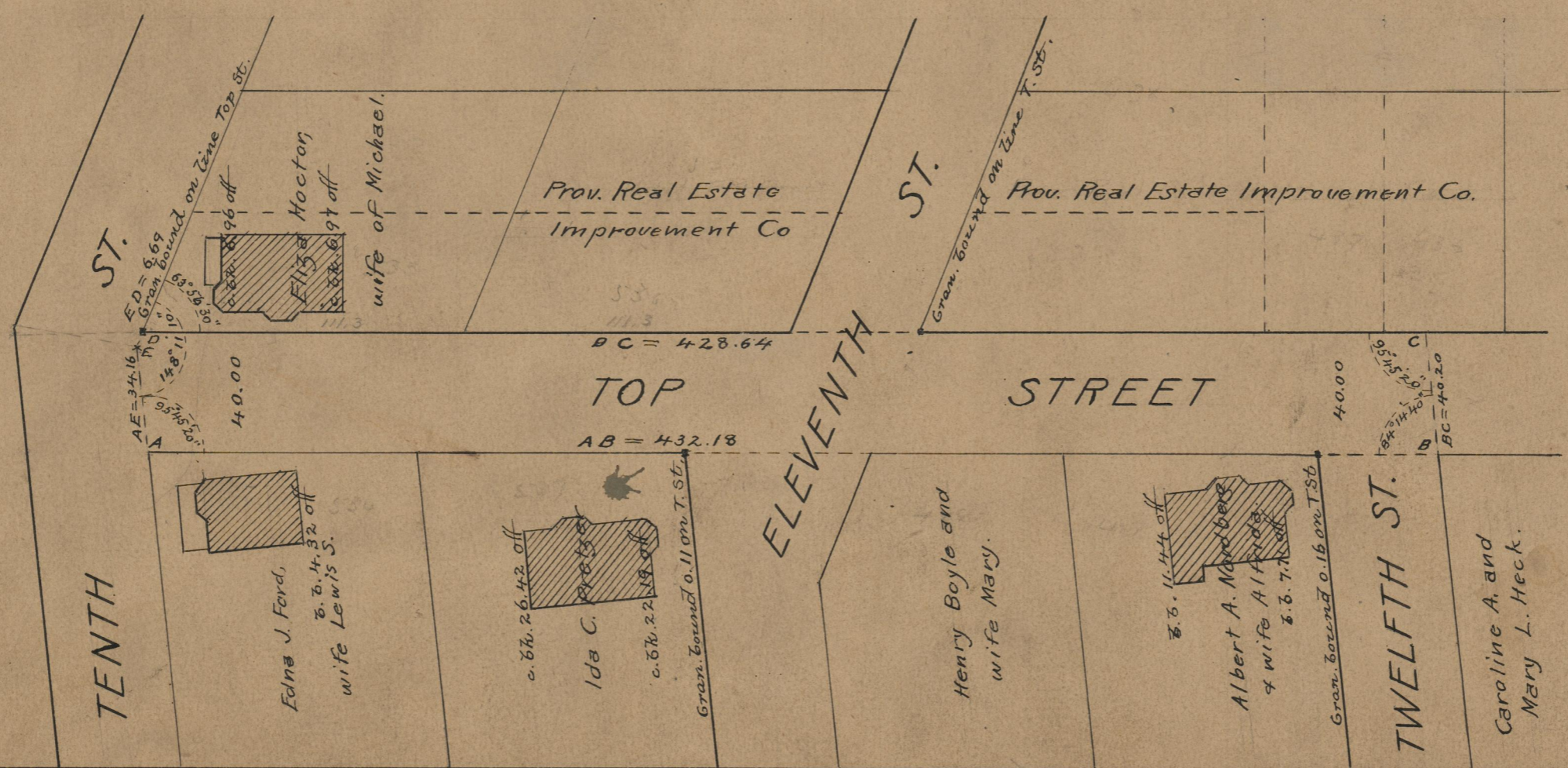
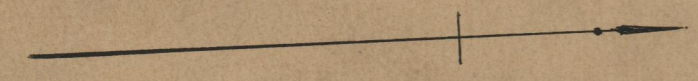
040434

Note, The area declared a public highway  
is indicated by the letters ABCDE.  
The lines thus fixed conform to the  
deed recorded in Deed Book 515, page  
340, in the office of the Recorder of Deeds.

PLAT OF  
**TOP STREET**  
FROM N'LY LINE OF TWELFTH ST. TO TENTH ST.  
SCALE 50 FEET PER INCH.  
DECLARED A PUBLIC HIGHWAY  
BY RESOLUTION OF THE  
BOARD OF ALDERMEN  
September 10, 1914.

428.64  
432.18  
21860.82  
730.41

Witness \_\_\_\_\_  
City Clerk



OFFICE No. 19374  
DRAWER " 74  
SHEET " A-25