

PROVIDENCE, R.I.  
CITY ENGINEER'S OFFICE  
STREET LINE DEPT.  
Oct 7. 1914  
040424

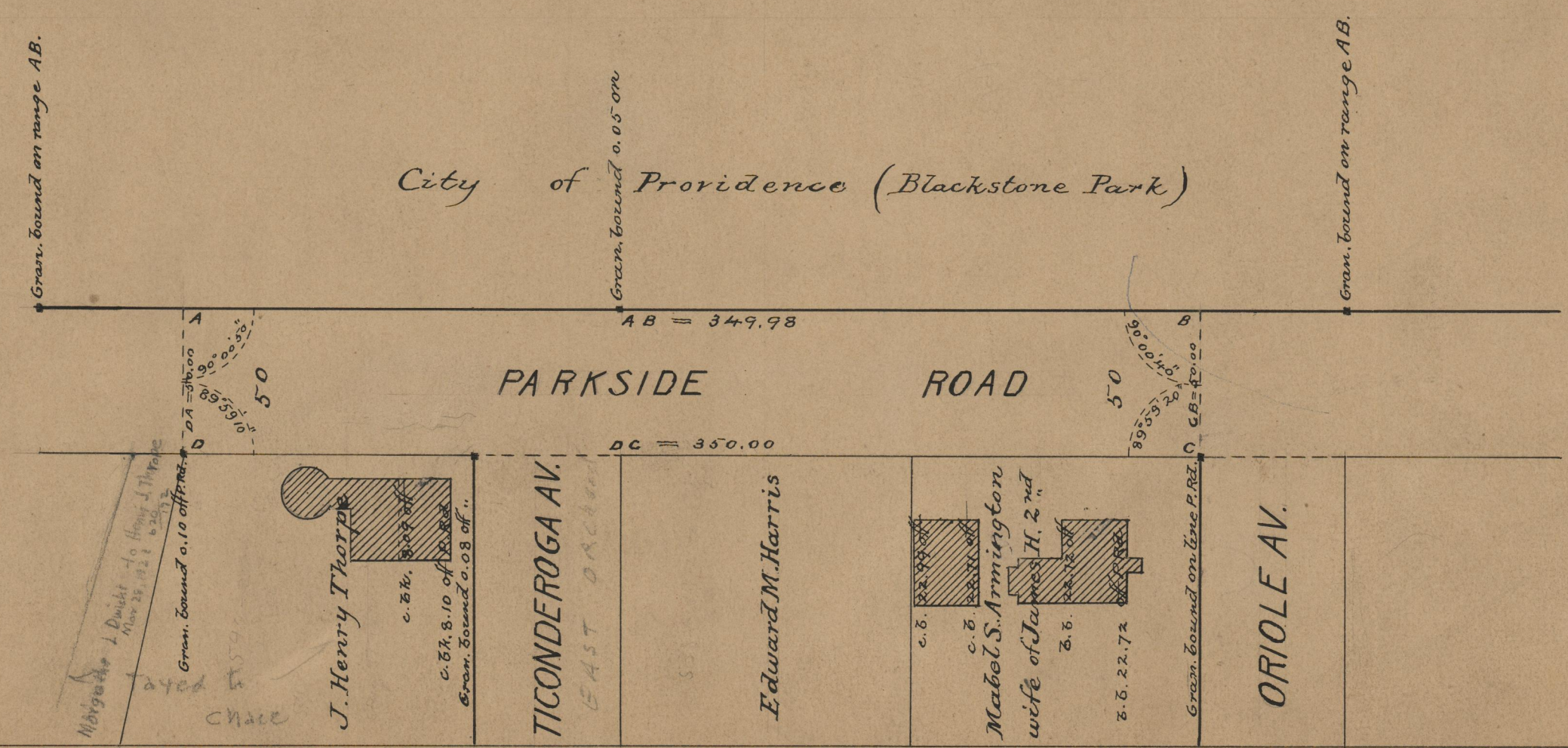
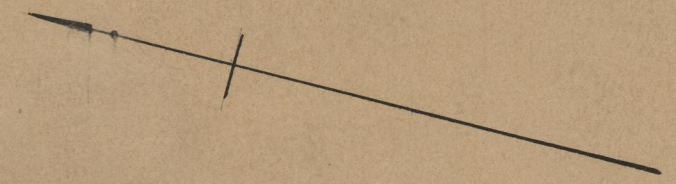
Note, The area declared a public highway  
is indicated by the letters ABCD.  
The lines thus fixed conform to the  
deeds in Deed Book 457, page 5, Deed Book  
538, page 392, and Deed Book 540, page  
200, in the office of the Recorder of Deeds.

# PLAT OF PARKSIDE ROAD

FROM ORIOLE AVE. TO A POINT  
100 FEET NORTH OF TICONDEROGA AVE.  
SCALE 50 FEET PER INCH,  
DECLARED A PUBLIC HIGHWAY  
BY RESOLUTION OF THE  
BOARD OF ALDERMEN,  
September 24, 1914.

349.99

Witness, \_\_\_\_\_  
City Clerk.



OFFICE No.	19373
DRAWER "	774
SHEET "	A-24