

Note, The area declared a public highway is indicated by the letters A B C. The lines thus fixed conform to the deeds recorded in Deed Book 536, page 374 and Deed Book 541, page 424 in the office of the Recorder of Deeds.

6-115-  
6-150

PLAT OF  
**WILCOX STREET**  
FROM RANGE OF N'W'LY LINE OF WEST RIVER ST.  
S'E'LY TO ITS S'E'LY TERMINATION,  
SCALE 40 FEET PER INCH  
DECLARED A PUBLIC HIGHWAY  
BY RESOLUTION OF THE  
BOARD OF ALDERMEN.  
September 10, 1914.

PROVIDENCE, R.I.  
CITY ENGINEER'S OFFICE  
STREET LINE DEPT.

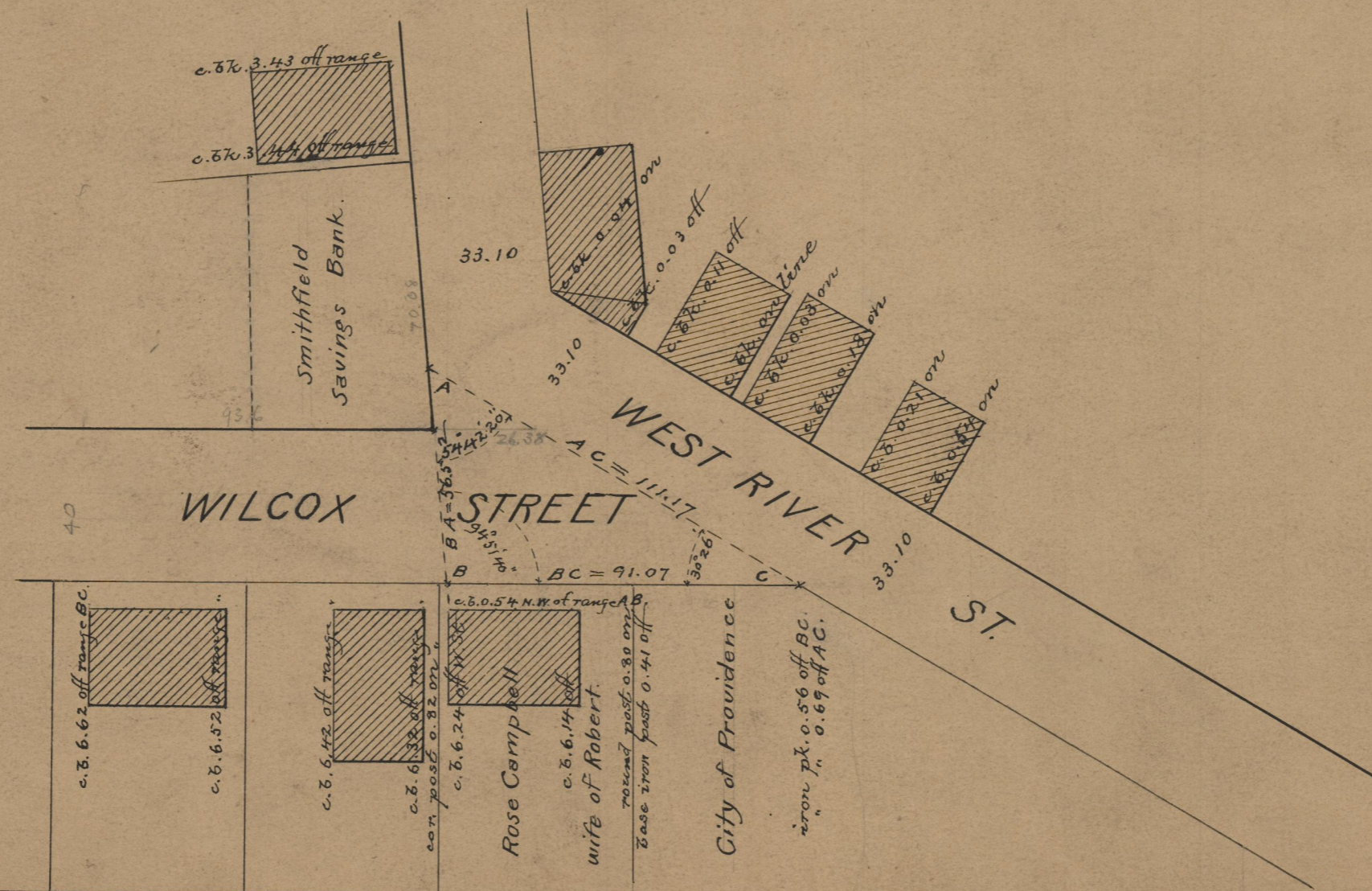
Oct. 14, 1914

040453

91.07  
26.38  
2117.78  
58.725

Witness, -----

City Clerk



OFFICE No. 19366  
DRAWER,, 74  
SHEET " A-21