

PROVIDENCE, R.I.
CITY ENGINEER'S OFFICE
STREET LINE DEPT.

Oct. 7, 1914

040432

Note, The area declared a public highway is indicated by the letters A B C D.
The lines thus fixed conform to the deeds recorded in Deed Book 404, page 373, Deed Book 544, page 326, and Deed book 546, page 133, in the office of the Recorder of Deeds.

PLAT OF IVY STREET

FROM N'LY LINE OF MT. HOPE AVE.

TO PLEASANT ST.

SCALE 50 FEET PER INCH.

DECLARED A PUBLIC HIGHWAY
BY RESOLUTION OF THE
BOARD OF ALDERMEN,

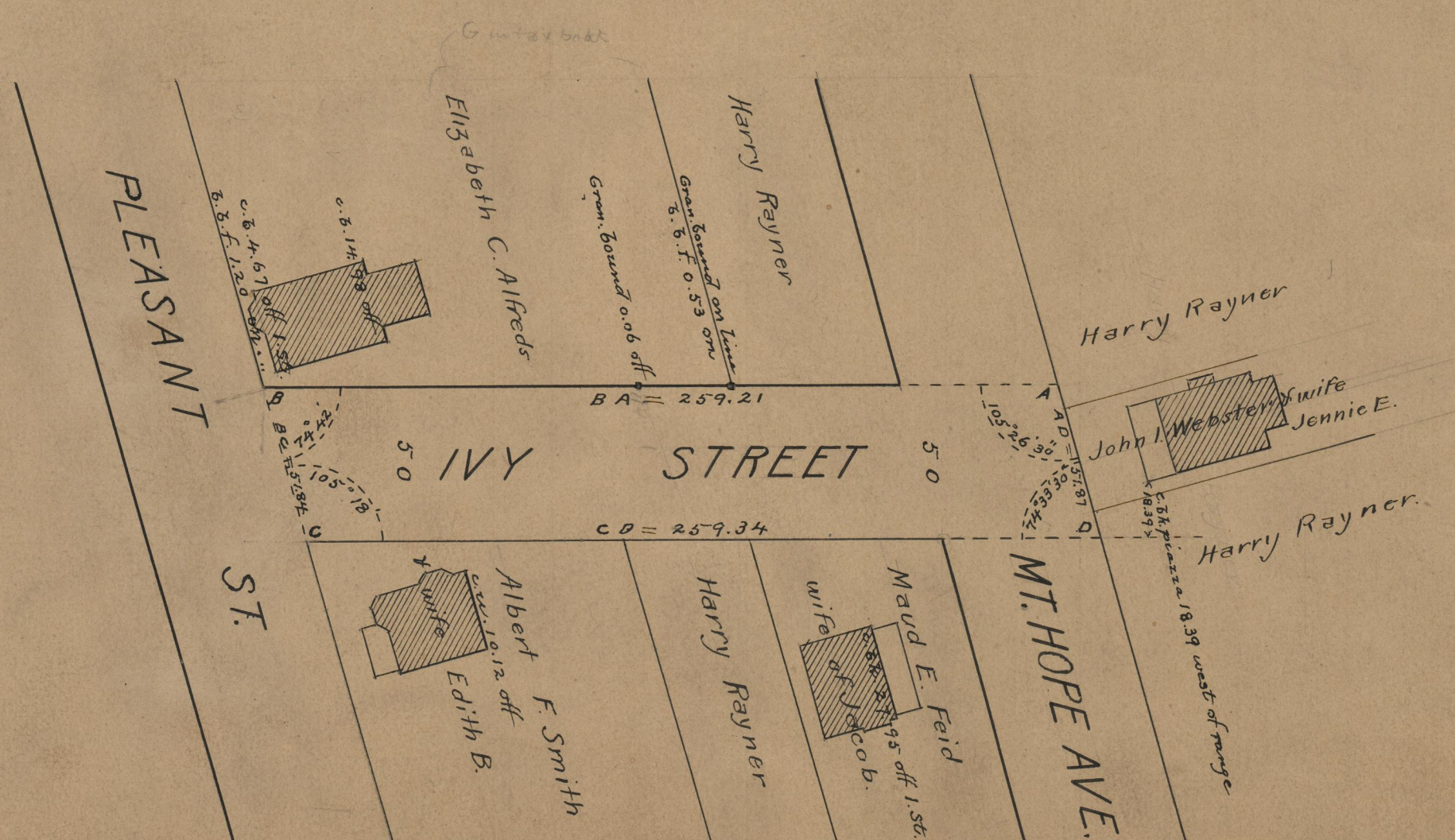
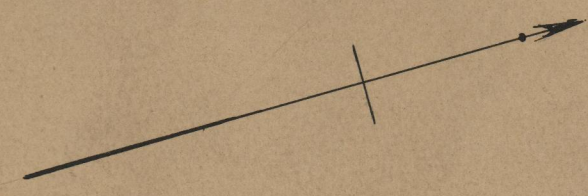
September 10, 1914.

*Changed to Alvy St, Aug. 12, 1915.
Changed to Hopedale Road, Mar. 6, 1922.*

Witness, -----

City Clerk.

259.21
259.34
2518.55
259.275



OFFICE No.	19365
DRAWER,,	74
SHEET,,	A-20