

PROVIDENCE, R.I.
CITY ENGINEER'S OFFICE
STREET LINE DEPT.

Oct. 7, 1914

040422

Note, The area declared a public highway
is indicated by the letters A B C D.
The lines thus fixed conform to the
deeds recorded in Deed book 540, pages
317 and 348, and Deed book 543, page 11,
in the office of the Recorder of Deeds.

PLAT OF
LAUREL AVENUE
FROM BLACKSTONE BOULEVARD TO GROTTO AVE.

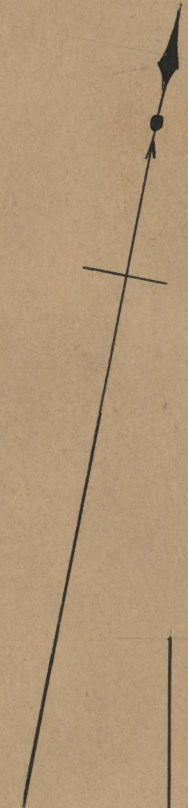
SCALE 50 FEET PER INCH.
DECLARED A PUBLIC HIGHWAY
BY RESOLUTION OF THE
BOARD OF ALDERMEN

August 6, 1914.

300.09

Witness -----

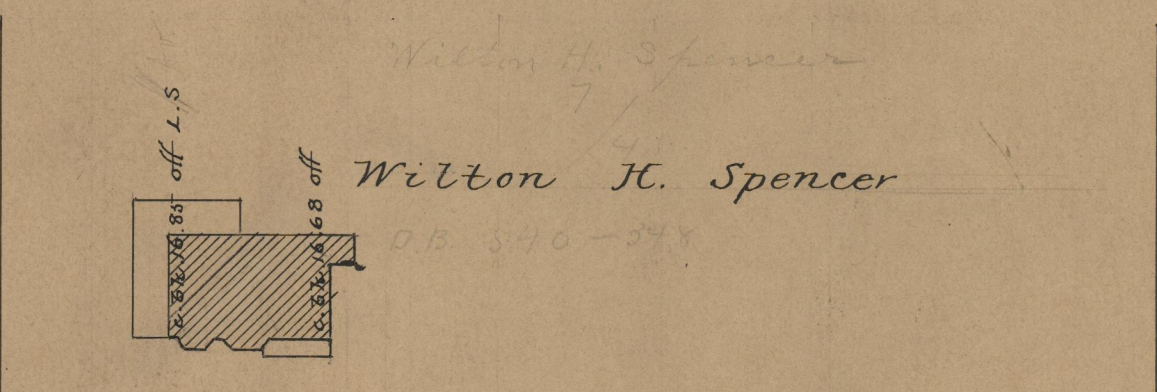
City Clerk.



BLACKSTONE

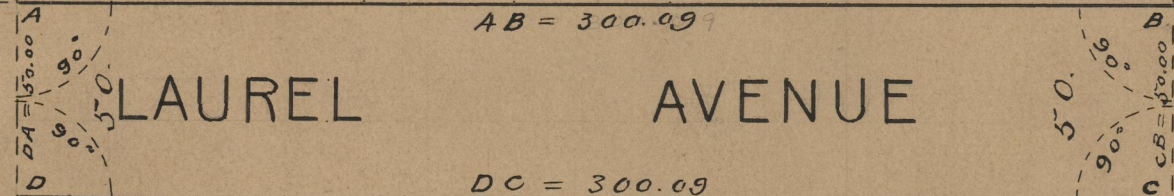
BOULEVARD

Granite bound on range A.B.



AVE.

Granite bound 0.24 off range A.B.



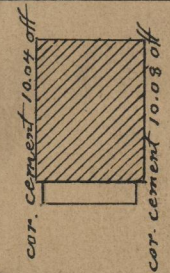
LAUREL AVENUE

John T. Cottrell Co.

John T. Cottrell Co.

Henry C. Hall.

Henry C. Hall



cor. wall on line L. Ave.

GROTTO

OFFICE No. 19363
DRAWER " 74
SHEET " A-18