

PROVIDENCE, R.I.
CITY ENGINEER'S OFFICE
STREET LINE DEPT.
Feb. 27, 1915

040734

PLAT OF
LYNCH STREET
FROM ATWELLS AVE. TO YALE AVE.
SCALE 50 FEET PER INCH.
DECLARED A PUBLIC HIGHWAY
BY RESOLUTION OF THE
BOARD OF ALDERMEN,
February 18, 1915.

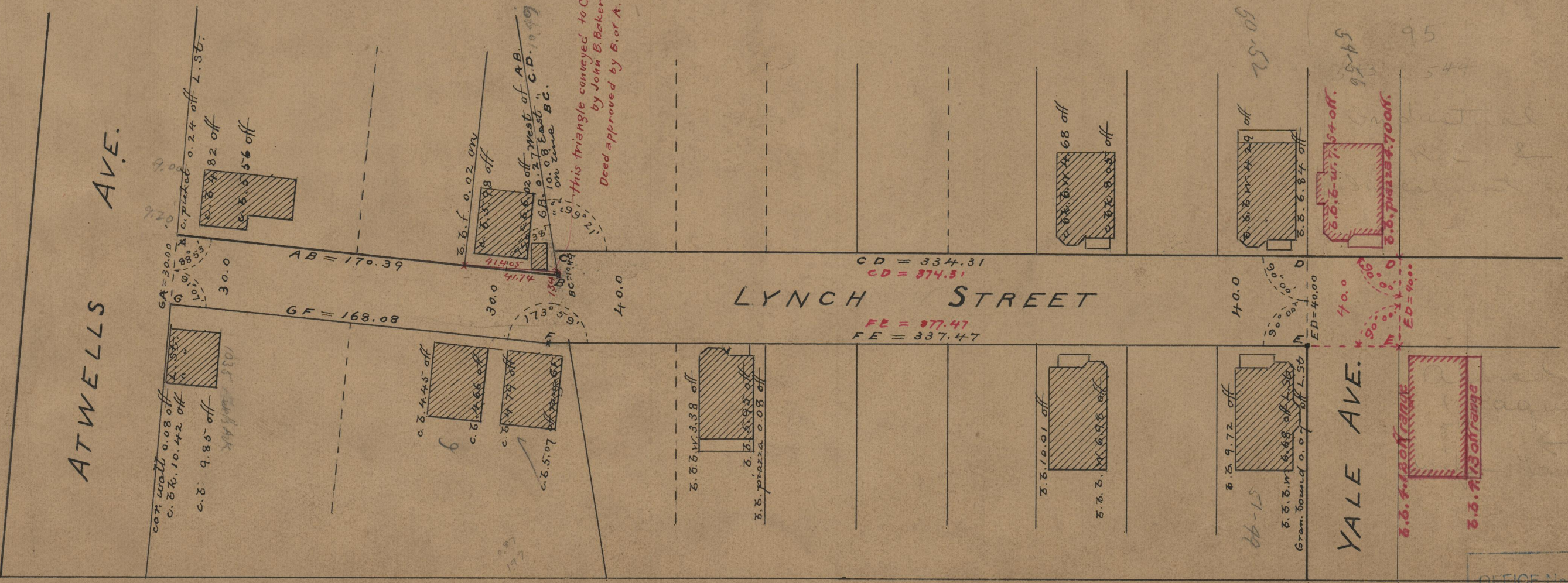
The black notes and figures correspond with the resolution of Aug. 6, 1914, appointing committee to lay out.
The red notes show the enlargement made by the resolution of Feb. 18, 1915.

Note, The area declared a public highway is indicated by the letters ABCDEFG.
The lines thus fixed conform to the deeds recorded in Deed Book 467, page 33, Deed Book 504, page 12 and Deed Book 546, pages 414 and 415 in the office of the Recorder of Deeds.

170.39
374.31
168.08
377.47

2) 1090.25
545.12

this triangle conveyed to City for highway purposes by John E. Baker June 18, 1917. Deed approved by S. of A. June 21, 1917.



OFFICE No. 19798
DRAWER 74
SHEET A-17