

PROVIDENCE, R.I.
CITY ENGINEER'S OFFICE
STREET LINE DEPT.

Aug. 13, 1914

040298

Note, The area declared a public highway is indicated by the letters A B C and D.
The lines thus fixed conform to the deeds recorded in Deed book 503, page 383, Deed book 506, page 254, Deed book 540, page 410, Deed book 543, pages 98, 237 and 239 and Deed book 546, page 37, in the office of the Recorder of Deeds.

PLAT OF ELGIN STREET

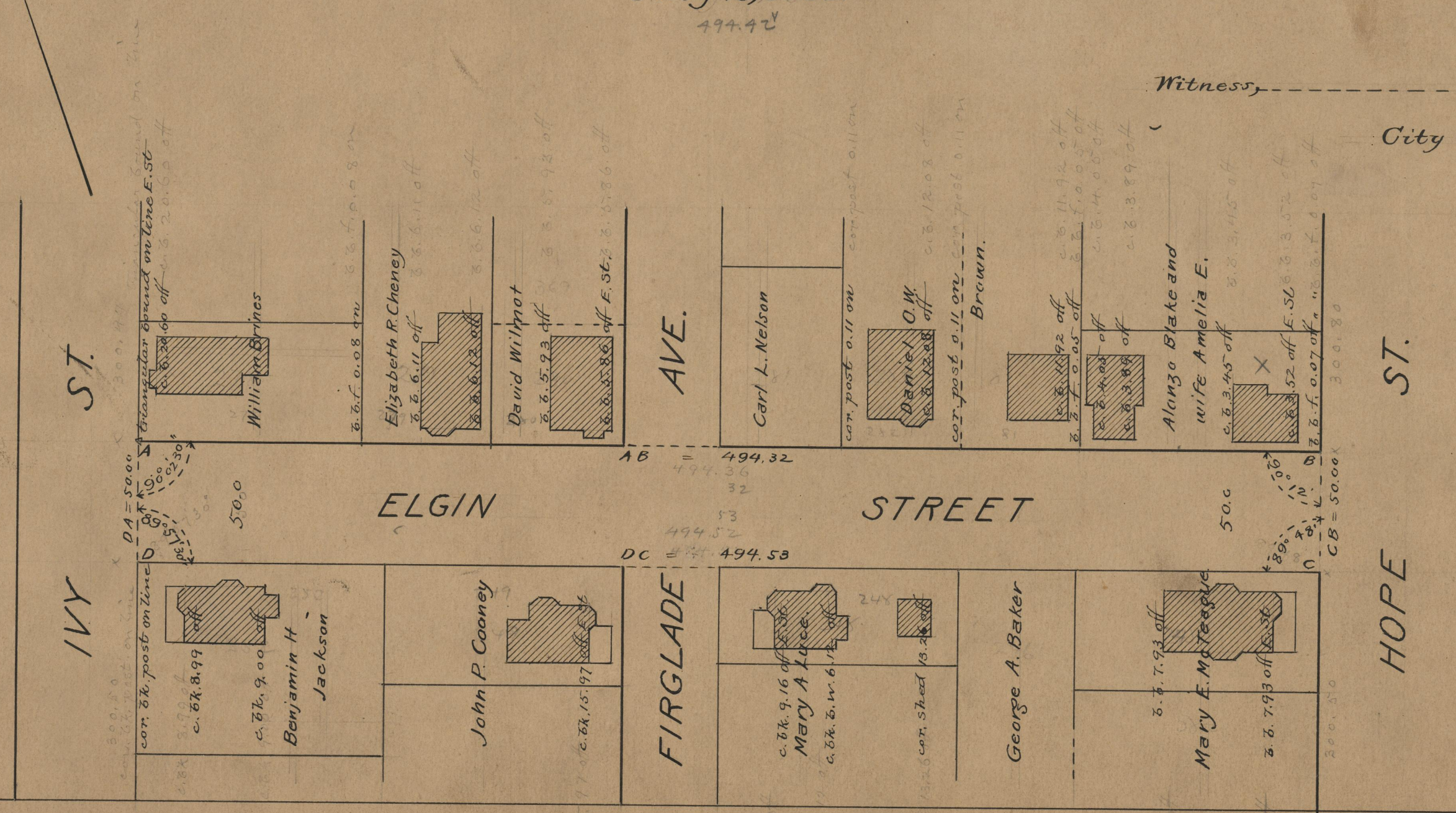
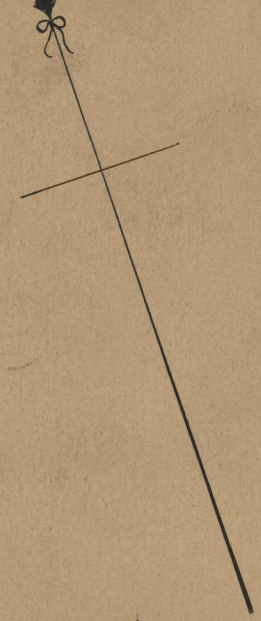
FROM IVY ST. TO HOPE ST.

SCALE 50 FEET PER INCH.

DECLARED A PUBLIC HIGHWAY
BY RESOLUTION OF THE
BOARD OF ALDERMEN,

July 2, 1914.

494.42



Witness, -----

City Clerk

OFFICE No. 19341
DRAWER " 74
SHEET " A-16