

PROVIDENCE, R.I.
CITY ENGINEER'S OFFICE

STREET LINE DEPT.

Aug. 13, 1914

040296

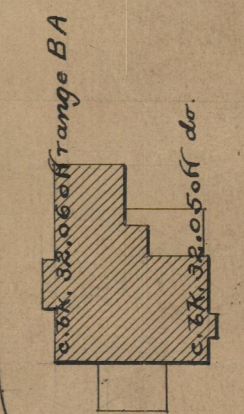
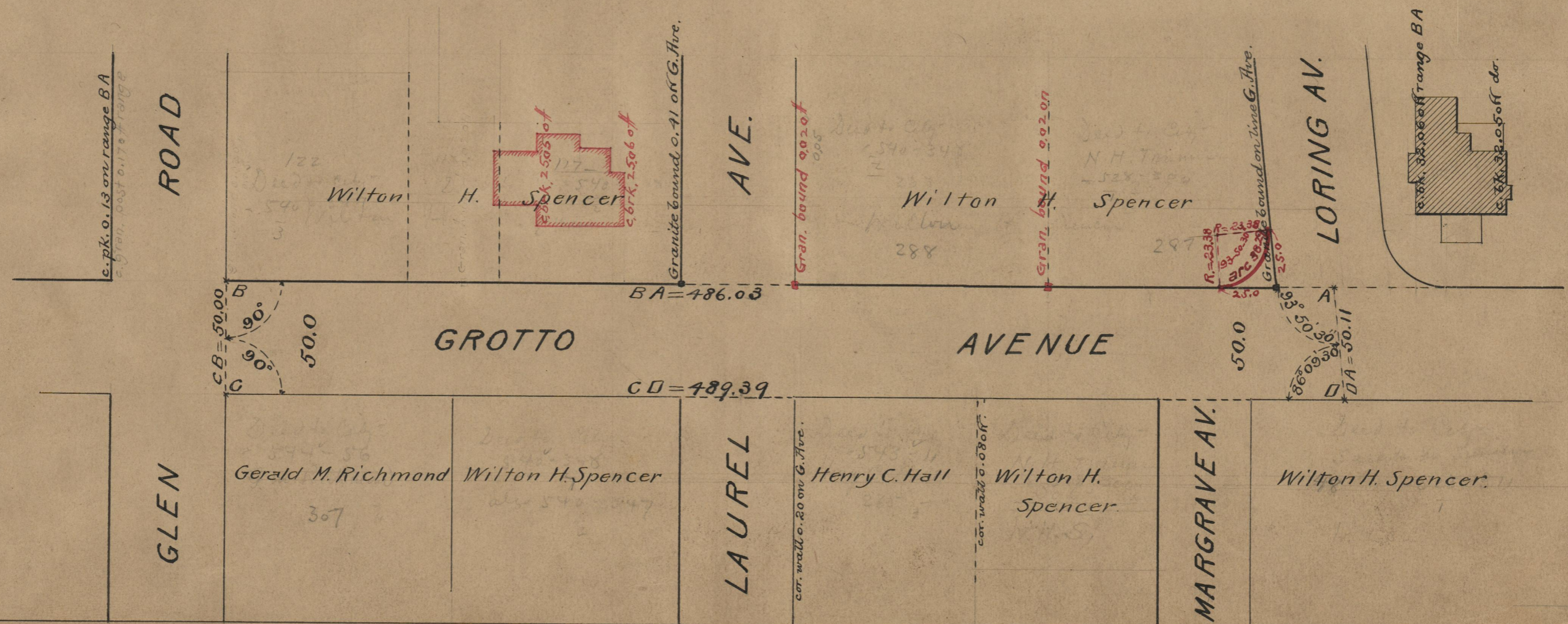
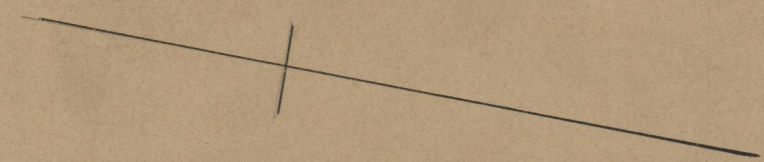
Note, The area declared a public highway is indicated by the letters ABCD.
The lines thus fixed conform to the deeds in Deed book 528, pages 300 and 311, Deed book 540, pages 347 and 348, Deed book 543, page 11 and Deed book 544, page 56, in the office of the Recorder of Deeds.

PLAT OF
GROTTO AVENUE
FROM CENTER LINE OF LORING AVE. TO GLEN ROAD
SCALE 50 FEET PER INCH.
DECLARED A PUBLIC HIGHWAY
BY RESOLUTION OF THE
BOARD OF ALDERMEN
June 18, 1914.

486.03
489.39
21775.42
487.71

Witness, _____
City Clerk.

Red notes show parcel declared a public highway Sept. 20, 1928.



OFFICE No. 19340
DRAWER " 74
SHEET A-15