

PROVIDENCE, R.I.
CITY ENGINEER'S OFFICE
STREET LINE DEPT.
Aug. 5, 1914

040270

Note, The area declared a public highway
is indicated by the letters ABCD.
The lines thus fixed conform to the deed
recorded in Deed book 523, page 261 in the
office of the Recorder of Deeds.

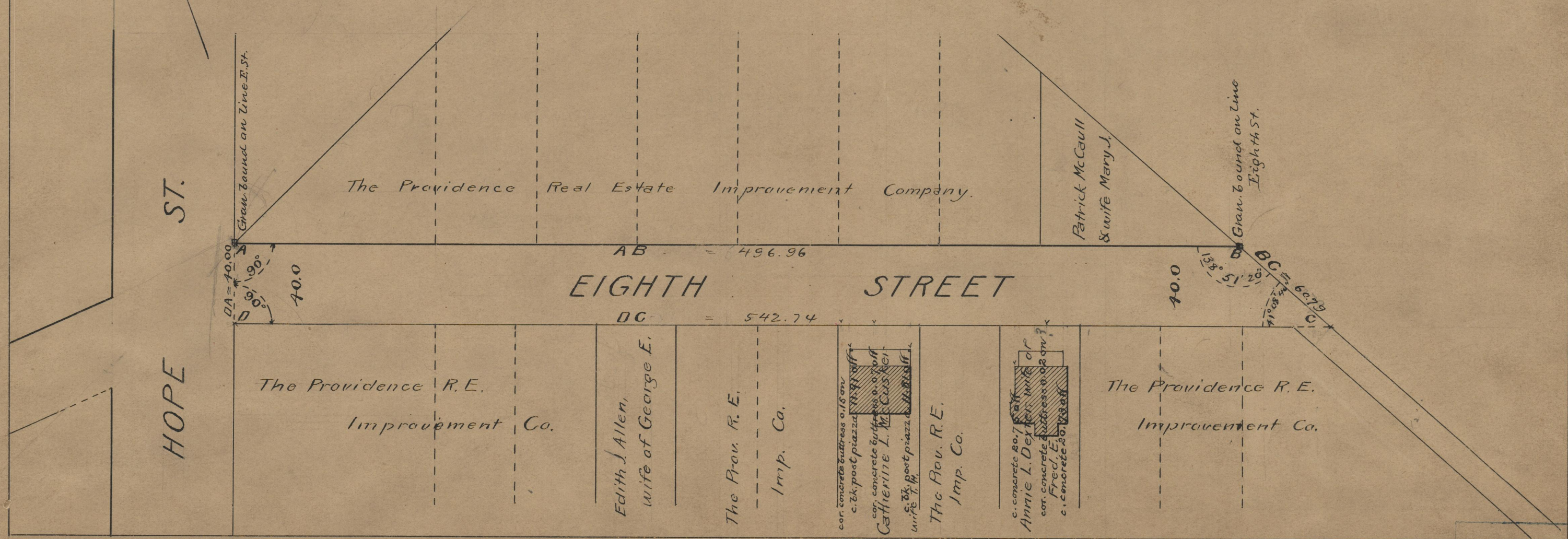
PLAT OF
EIGHTH STREET
FROM HOPE ST. TO E'LY. TERMINATION
SCALE 50 FEET PER INCH.

DECLARED A PUBLIC HIGHWAY
BY RESOLUTION OF THE
BOARD OF ALDERMEN,
May 21, 1914

496.96
542.74

21039.70
579.66

Witness.....
City Clerk.



OFFICE No. 19322
DRAWER " 74
SHEET " A-13