

640
Aug 5 1914

PROVIDENCE, R.I.
CITY ENGINEER'S OFFICE
STREET LINE DEPT.
Aug 5 1914
040262

Note: The area declared a public highway
is indicated by the letters A B C D.
The lines thus fixed conform to the deeds
recorded in Deed book 523, page 261, and Deed
book 591, pages 299 and 349, in the office of the
Recorder of Deeds.

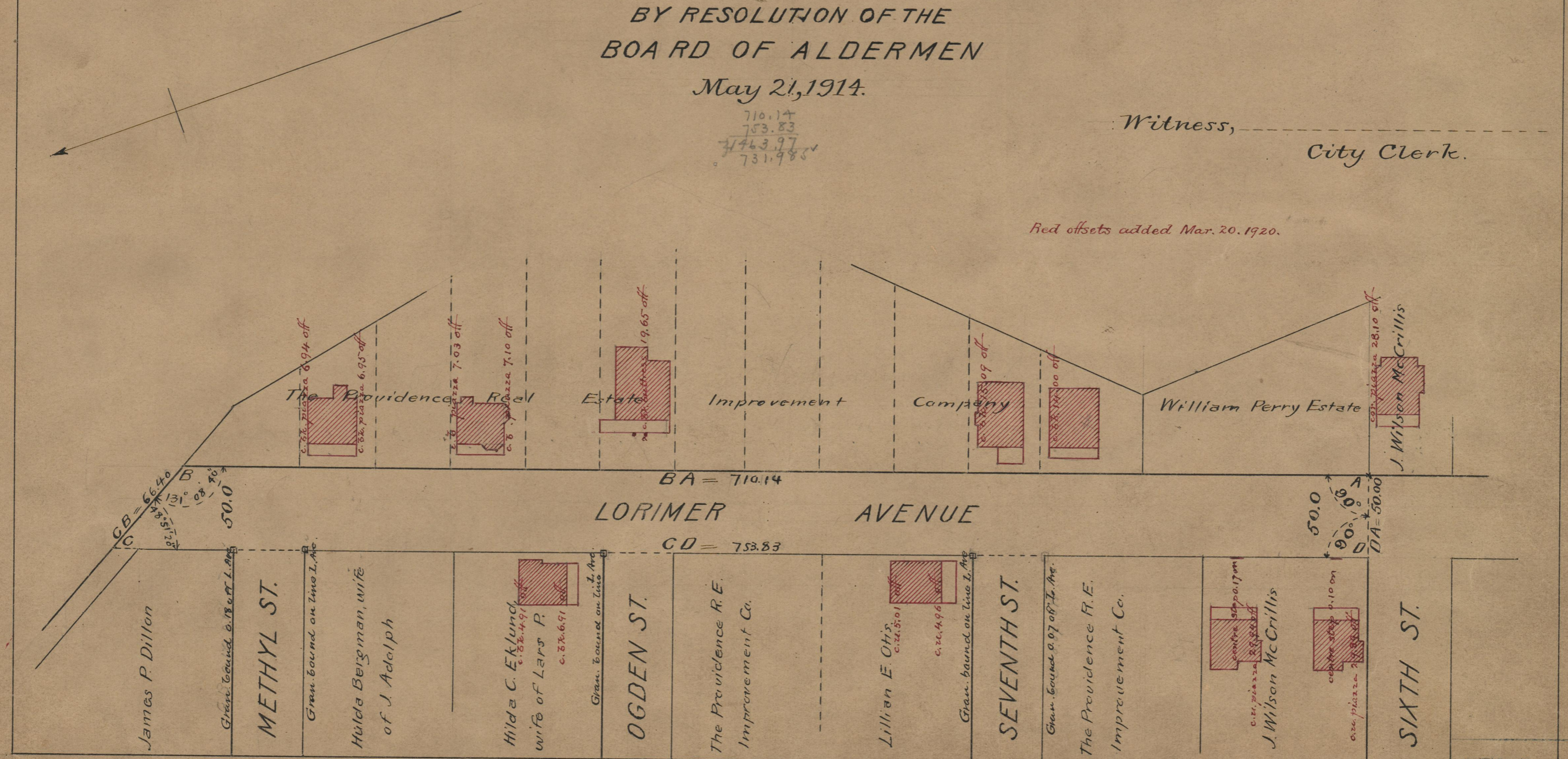
PLAT OF
LORIMER AVENUE
FROM N'LY LINE OF SIXTH ST. TO N'LY TERMINATION
SCALE 60 FEET PER INCH.

DECLARED A PUBLIC HIGHWAY
BY RESOLUTION OF THE
BOARD OF ALDERMEN
May 21, 1914.

710.14
753.83
1463.97
731.985

Witness, _____
City Clerk.

Red offsets added Mar. 20, 1920.



OFFICE No. 19318
DRAWER " 74
SHEET " A-9