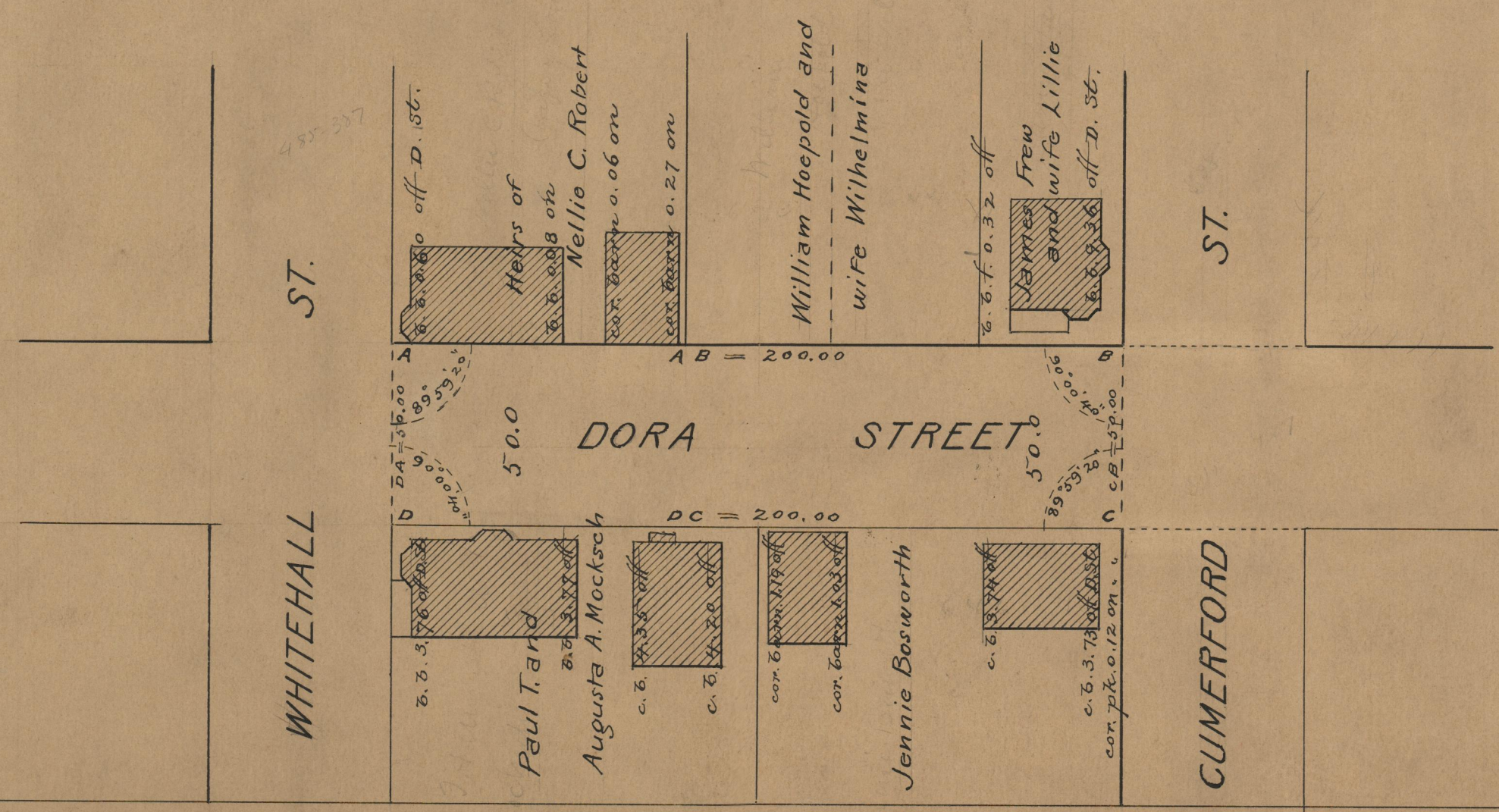


PROVIDENCE, R.I.
CITY ENGINEER'S OFFICE
STREET LINE DEPT.
June 26, 1914
040183

Note, The area declared a public highway is indicated by the letters A B C D.
The lines thus fixed conform to the deeds recorded in Deed Book 485, page 387, Deed Book 511, page 427, Deed Book 528, page 312, Deed Book 536, pages 381 & 394, in the office of the Recorder of Deeds.

PLAT OF
DORA STREET
FROM WHITEHALL ST. TO CUMERFORD ST.

SCALE 40 FEET PER INCH.
DECLARED A PUBLIC HIGHWAY
BY RESOLUTION OF THE
BOARD OF ALDERMEN
March 19, 1914.
200'



OFFICE No. 19310
DRAWER,, 74
SHEET A-7