

T. F. C. 2213-136-7.  
 PROVIDENCE, R.I.  
 CITY ENGINEER'S OFFICE  
 STREET LINE DEPT.  
 Aug. 31, 1928.  
 051043

PLAT OF  
**DEXTERDALE ROAD**

FROM SUMMIT AVE. TO CAMP ST  
 SCALE 50 FEET PER INCH  
 DECLARED A PUBLIC HIGHWAY BY RESOLUTION  
 OF THE BOARD OF ALDERMEN  
 MAY 17, 1928



CAMP ST.

ST.

Annie D. Pepler, et al

Philip H. M. Redford,  
 et ux Harriet B.  
 c. und. 21.38 off.  
 c. con. block 20.30 off.

Howard S. Harris,

et ux L. M. M.  
 c. dk. piazza 14.20 off.  
 c. dk. piazza 14.09 off.

Harriet A. Dudley,  
 wife of Charles E.  
 c. dk. piazza 12.13 off.  
 c. dk. piazza 12.14 off.

Ira W. Knight  
 c. d. 30.06 off

Raymond H. Chase  
 c. dk. 20.00 off.

Edward J. Brunckow,  
 et ux Marion L.  
 face con. block piazza post 11.89 off.  
 face con. block piazza post 11.91 off.

Richard F. Harnedy.  
 c. d. 15.77 off.  
 c. d. 15.79 off D. Rd.

DEXTERDALE ROAD

BA = 738.96  
 DE = 740.28

CAMP

Annie D. Pepler, et al

Anastasia Sorel

Annie D. Pepler, et al

George E. Withington

Samuel G. Carr,  
 et ux Alice M.  
 c. concrete und. 20.01 off.  
 c. con. piazza post 18.20 off.

Howard E. Eagleston,

et ux Nellie M.  
 c. und. 20.85 off.  
 c. und. 20.86 off.

Lottie G. Gilmore

c. d. 19.91 off.  
 c. dk. 19.95 off.

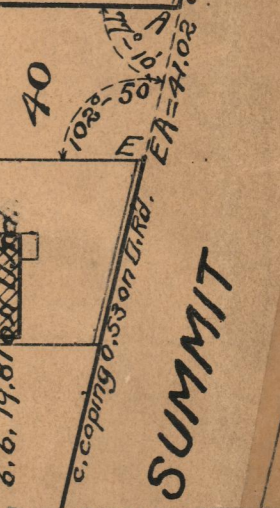
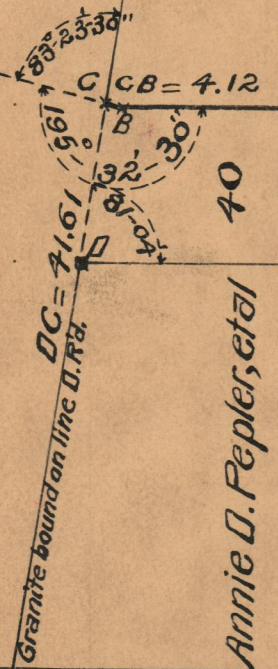
Hazel B. Clarke,

wife of Richard H.  
 c. dk. 19.65 off.  
 c. dk. 19.74 off.

Harold R. Shippee

Mabel G. Crosby,  
 wife of James  
 c. d. 19.81 off D. Rd.

SUMMIT AVE.



OFFICE No. 24406  
 DRAWER " 73  
 SHEET " B-100