

T. F. C. 2213-139

PROVIDENCE, R.I.
CITY ENGINEER'S OFFICE

STREET LINE DEPT.

Sept. 29, 1928.

051042

PLAT OF GARFIELD AVENUE

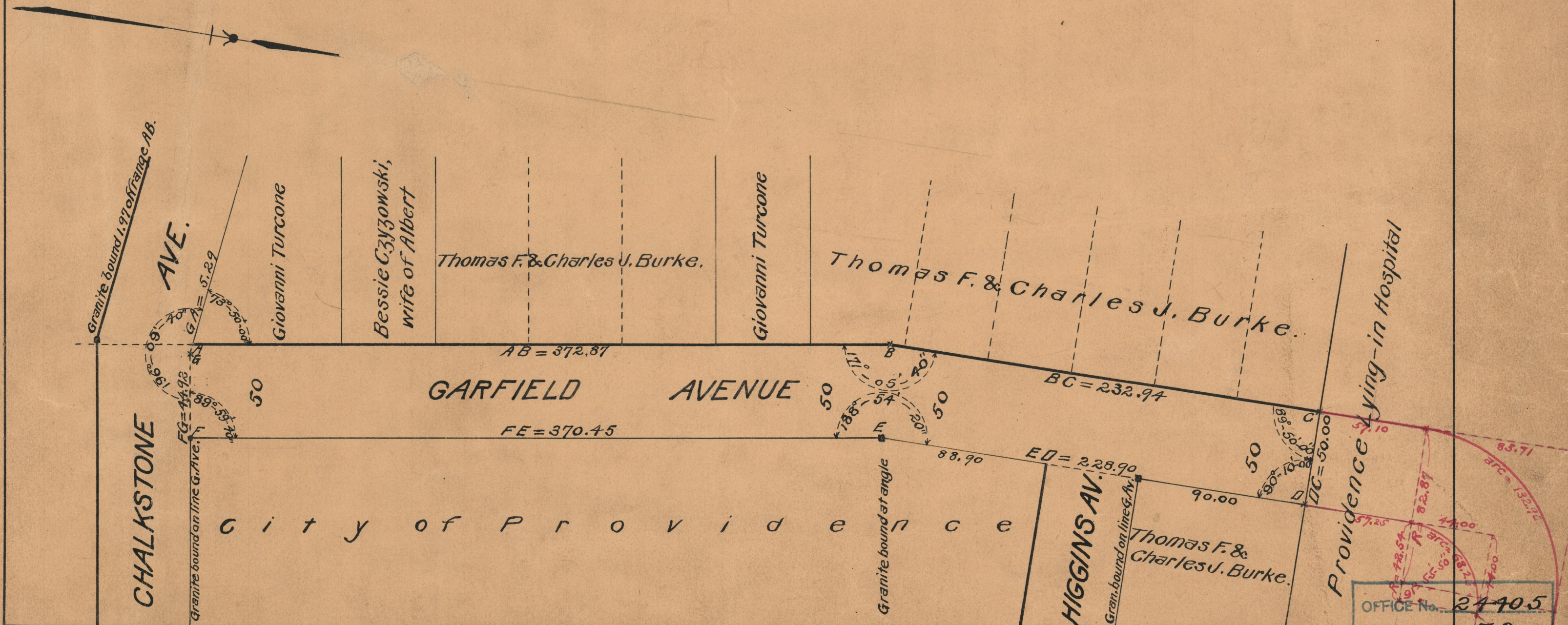
FROM

CHALKSTONE AVE. TO LAND OF PROVIDENCE LYING-IN HOSPITAL

BOARD OF ALDERMEN

APRIL 4, 1929

Scale: 1" = 50'



OFFICE No.	24405
DRAWER	73
SHEET	B-99