

PLAT OF

RUSHMORE AVENUE

FROM NORTH LINE OF ADA AVE. TO MANTON AVE.

IN TWO SHEETS

SCALE 40 FEET PER INCH

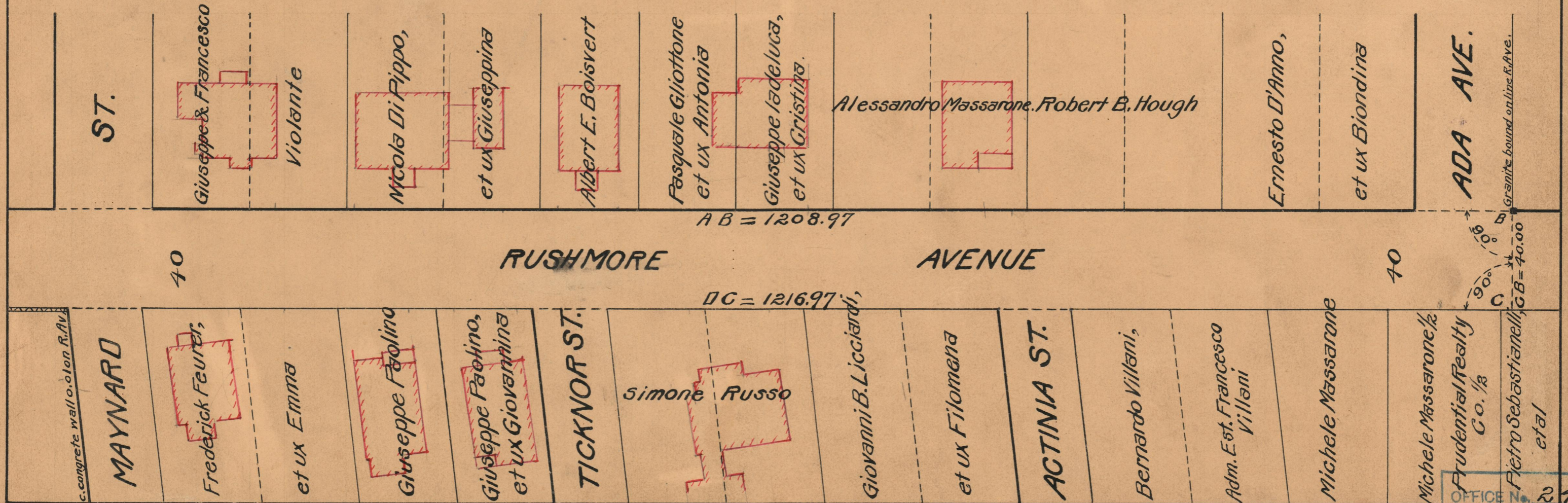
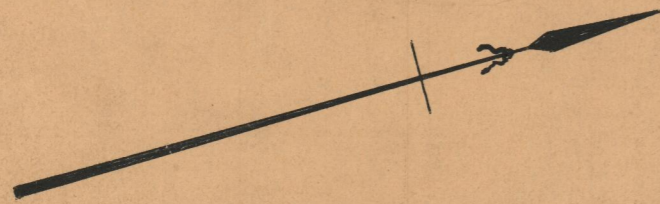
*Declared and established a Public Highway
By resolution of the Board of Aldermen
October 18, 1928.*

PROVIDENCE, R.I.
CITY ENGINEER'S OFFICE

STREET LINE DEPT.

Aug. 20, 1928.

051032



OFFICE NO. 24400
 DRAWER " 73
 SHEET " B-94