

PLAT OF RUSHMORE AVENUE

FROM NORTH LINE OF ADA AVE. TO MANTON AVE.

IN TWO SHEETS

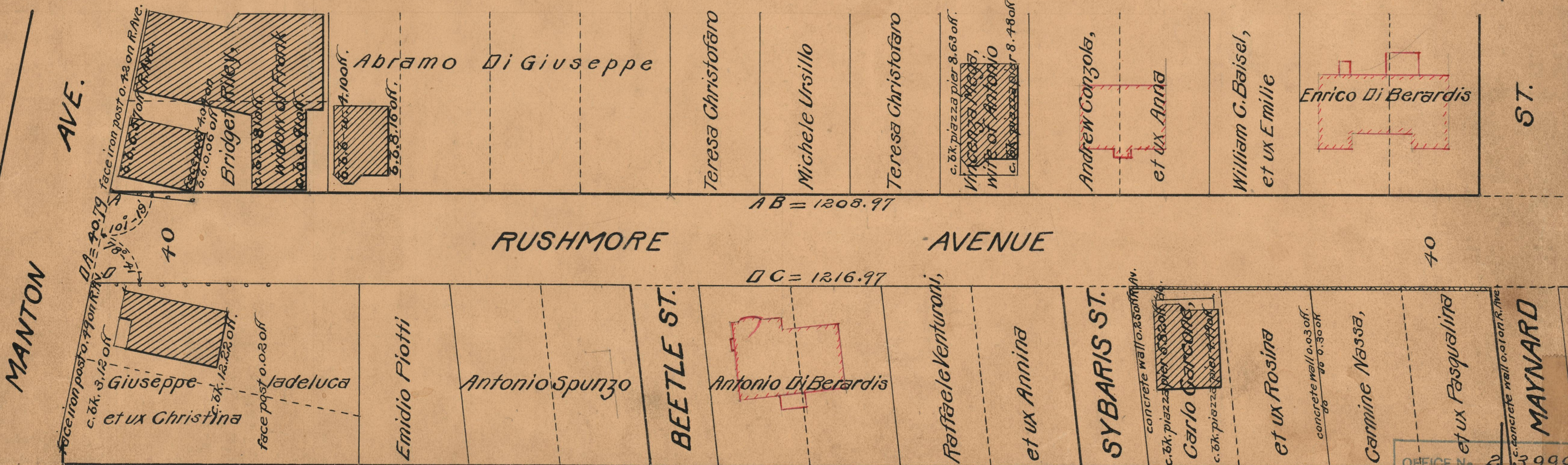
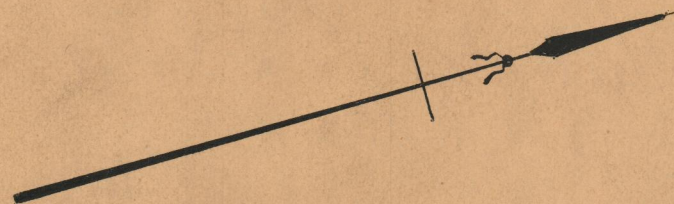
SCALE 40 FEET PER INCH

*Declared and established a Public Highway
By resolution of the Board of Aldermen
October 18, 1928.*

PROVIDENCE, R.I.
CITY ENGINEER'S OFFICE
STREET LINE DEPT.

Aug. 20, 1928.

051031



OFFICE NO. 23999
 DRAWER 73
 SHEET B-93