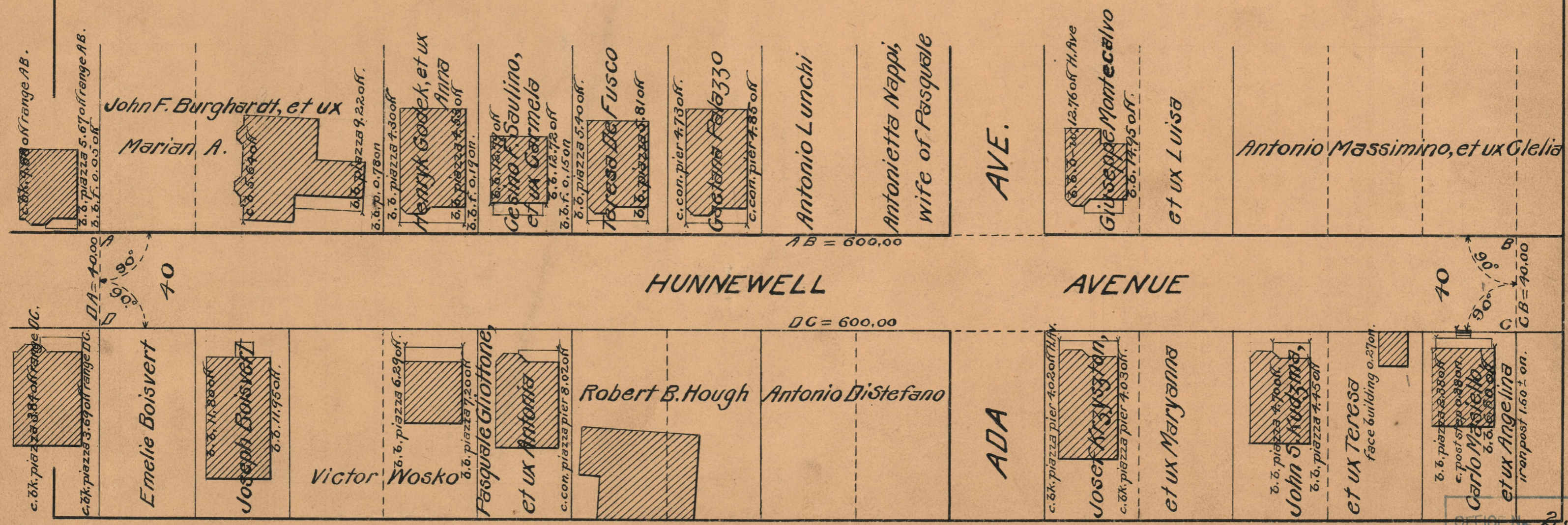


PROVIDENCE, R.I.
CITY ENGINEER'S OFFICE
STREET LINE DEPT.
Aug. 18, 1928.
051030

PLAT OF HUNNEWELL AVENUE

FROM THE PART ALREADY RECEIVED TO 200 FEET NORTH OF ADA AVE
SCALE 40 FEET PER INCH

Declared and established a Public Highway by the
Resolution of the Board of Aldermen
October 18, 1928.



OFFICE No. 23998
DRAWER " 73
SHEET " B-92