

2881-70
L.P.R. 2646-16-17.

PROVIDENCE, R.I.
CITY ENGINEER'S OFFICE
STREET LINE DEPT.

Aug. 14, 1928.

051012

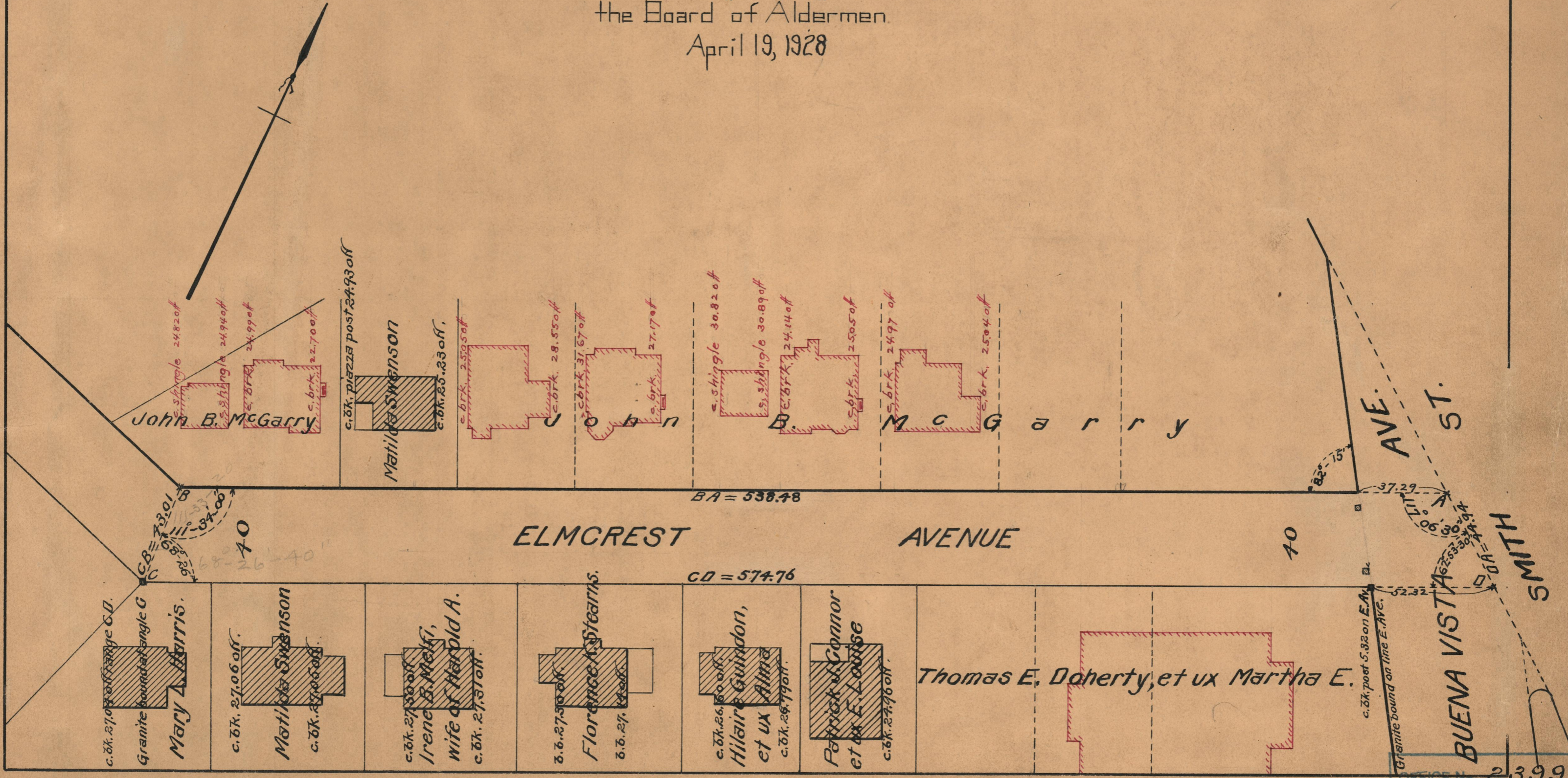
PLAT OF ELMCREST AVENUE

FROM SMITH ST. SOUTHERLY TO THE ANGLE

SCALE 40 FEET PER INCH

Declared a Public Highway by resolution of
the Board of Aldermen.

April 19, 1928



John B. McGarry

Matilda SWENSON

Matilda Swenson

U
O
N

B.
M
C
G
A
R
R
Y

M
C
G
A
R
R
Y

AVE.
ST.

BUENA VISTA
SMITH

Mary A. Harris.

Matilda Swenson

Irene B. Maki,
wife of Harold A.

Florence A. Stearns.

Hilair Guindon,
et ux Alma

Patrick J. Connor
et ux E. Louise

Thomas E. Doherty, et ux Martha E.

BA = 538.48

CD = 574.76

40

40

| | |
|------------|-------|
| OFFICE No. | 23991 |
| DRAWER | 73 |
| SHEET | B-90 |