

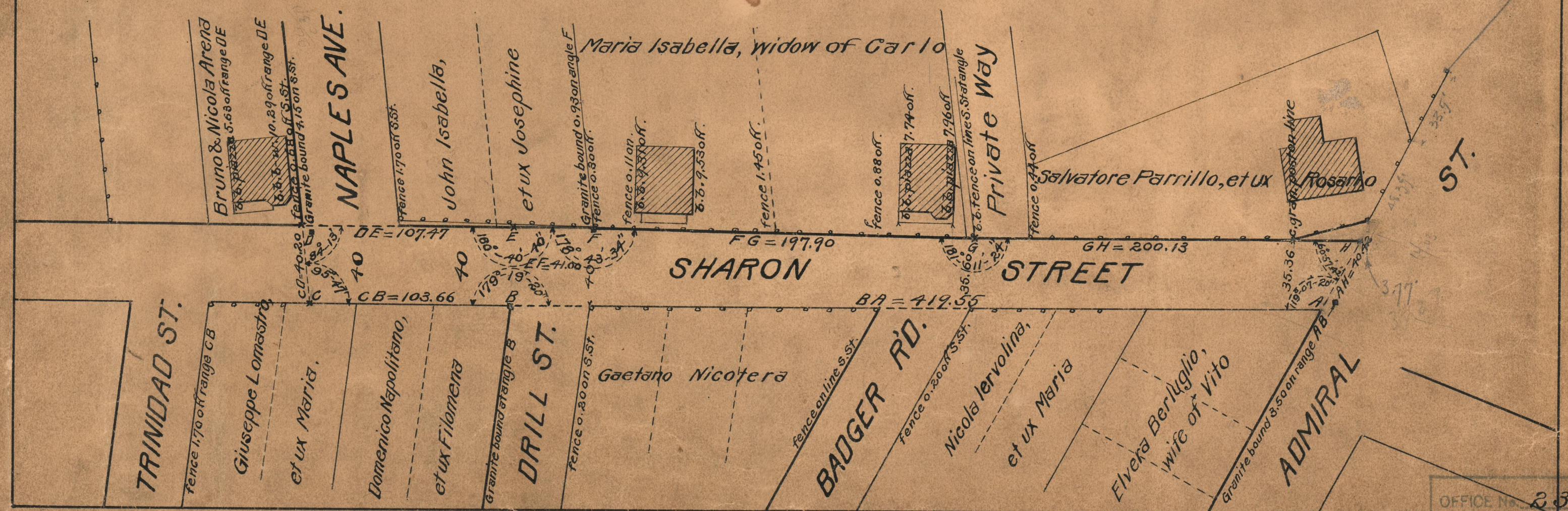
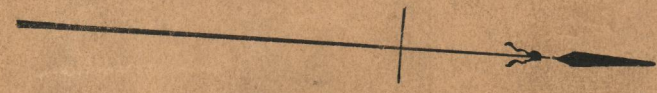
# PLAT OF SHARON STREET

FROM ADMIRAL ST. TO THE RANGE OF SOUTH LINE OF NAPLES AVE.

SCALE 50 FEET PER INCH

Declared and established as a Public Highway by the Resolution of the Board of Aldermen August 2, 1928

PROVIDENCE, R.I.  
CITY ENGINEER'S OFFICE  
STREET LINE DEPT.  
Aug. 8, 1928.  
051011



OFFICE No.	23990
DRAWN	73
SHEET	E-89