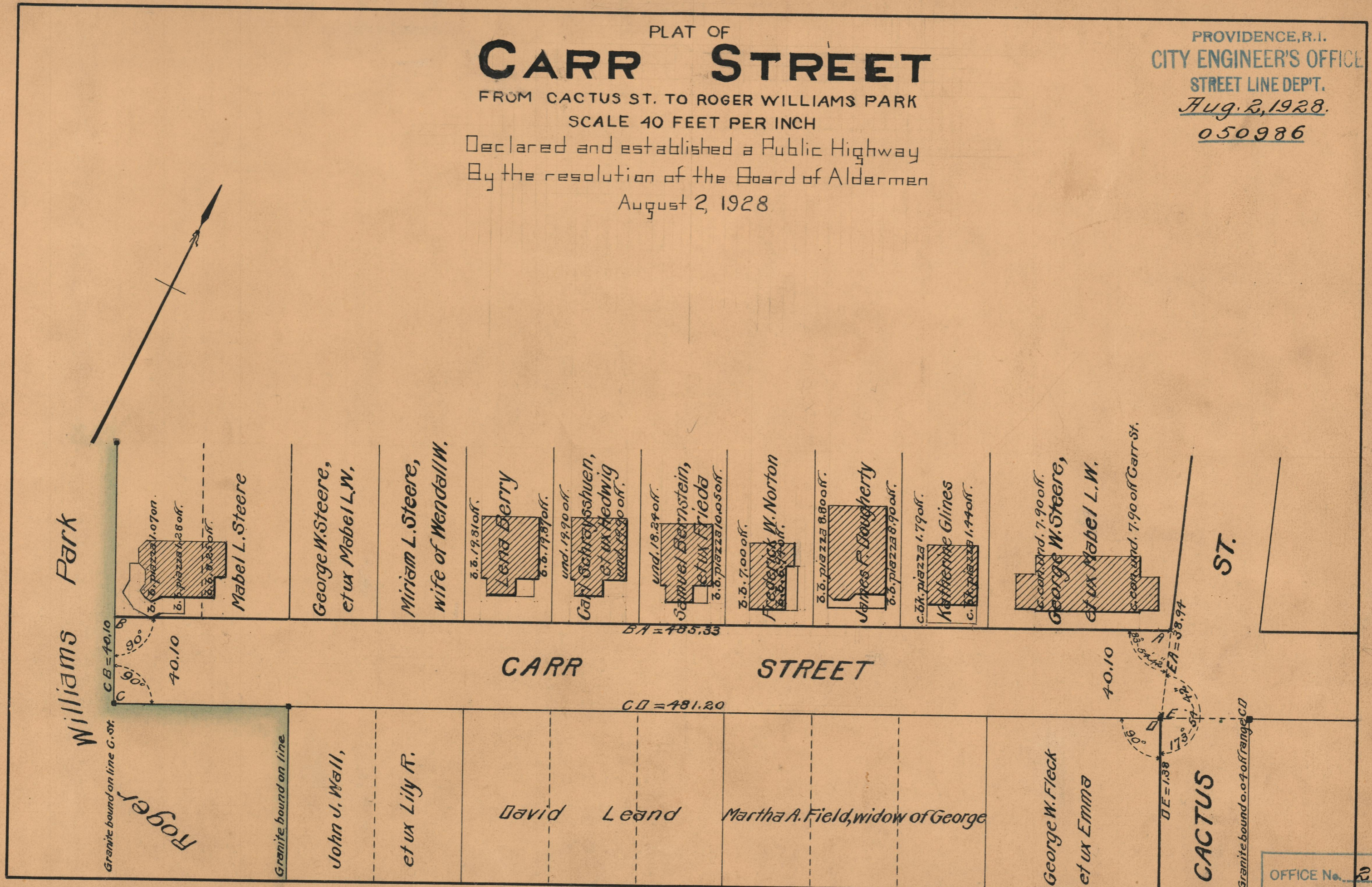


PLAT OF
CARR STREET

FROM CACTUS ST. TO ROGER WILLIAMS PARK
 SCALE 40 FEET PER INCH

Declared and established a Public Highway
 By the resolution of the Board of Aldermen
 August 2, 1928

PROVIDENCE, R.I.
 CITY ENGINEER'S OFFICE
 STREET LINE DEPT.
Aug. 2, 1928.
050986



OFFICE No. 23977
 DRAWER " 73
 SHEET " B-88