

SHEET ONE

PLAT OF

# ACADEMY AVENUE

FROM MINK RD. TO EATON ST

IN TWO SHEETS

SCALE 50 FEET PER INCH

Declared and established a Public Highway  
By resolution of the Board of Aldermen  
August 2, 1928.

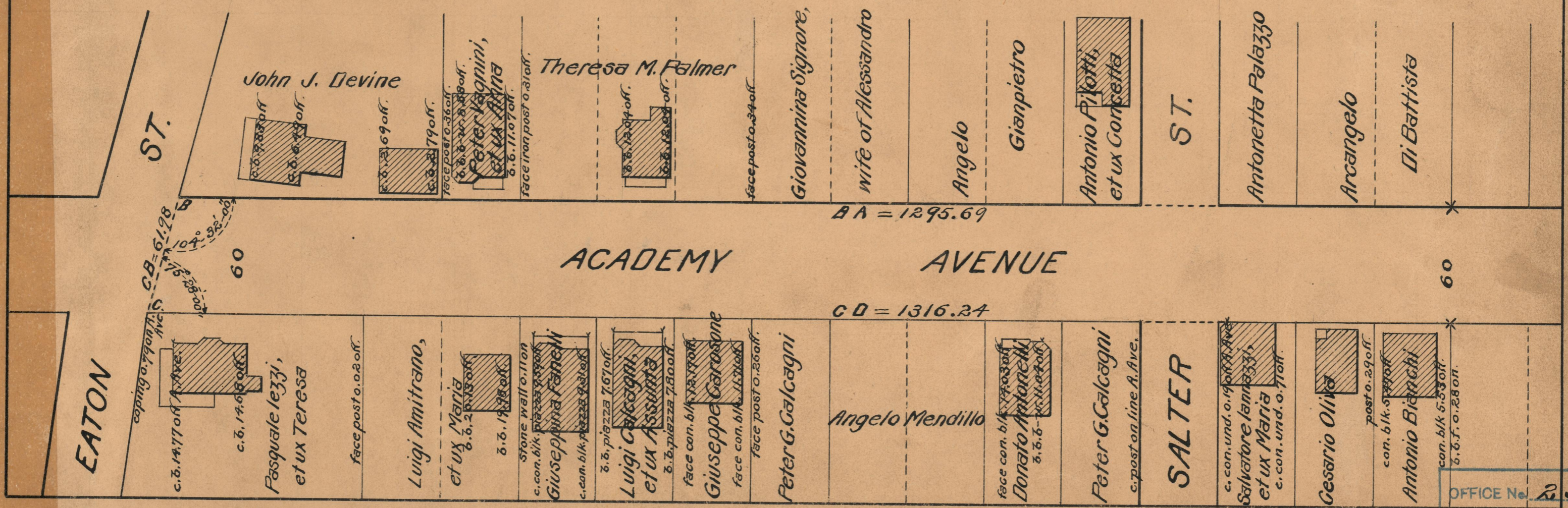
L.P.R. 2646-26-29

PROVIDENCE, R.I.  
CITY ENGINEER'S OFFICE

STREET LINE DEPT.

Aug. 2, 1928.

050982



OFFICE No. 23973  
 DRAWER " 73  
 SHEET " B-84