

SHEET TWO

PLAT OF

FOURTH STREET

FROM HOPE ST. TO HOLLY ST.

IN TWO SHEETS

SCALE 40 FEET PER INCH

*Declared and established a Public Highway
By the resolution of the Board of Aldermen
August 2, 1928*

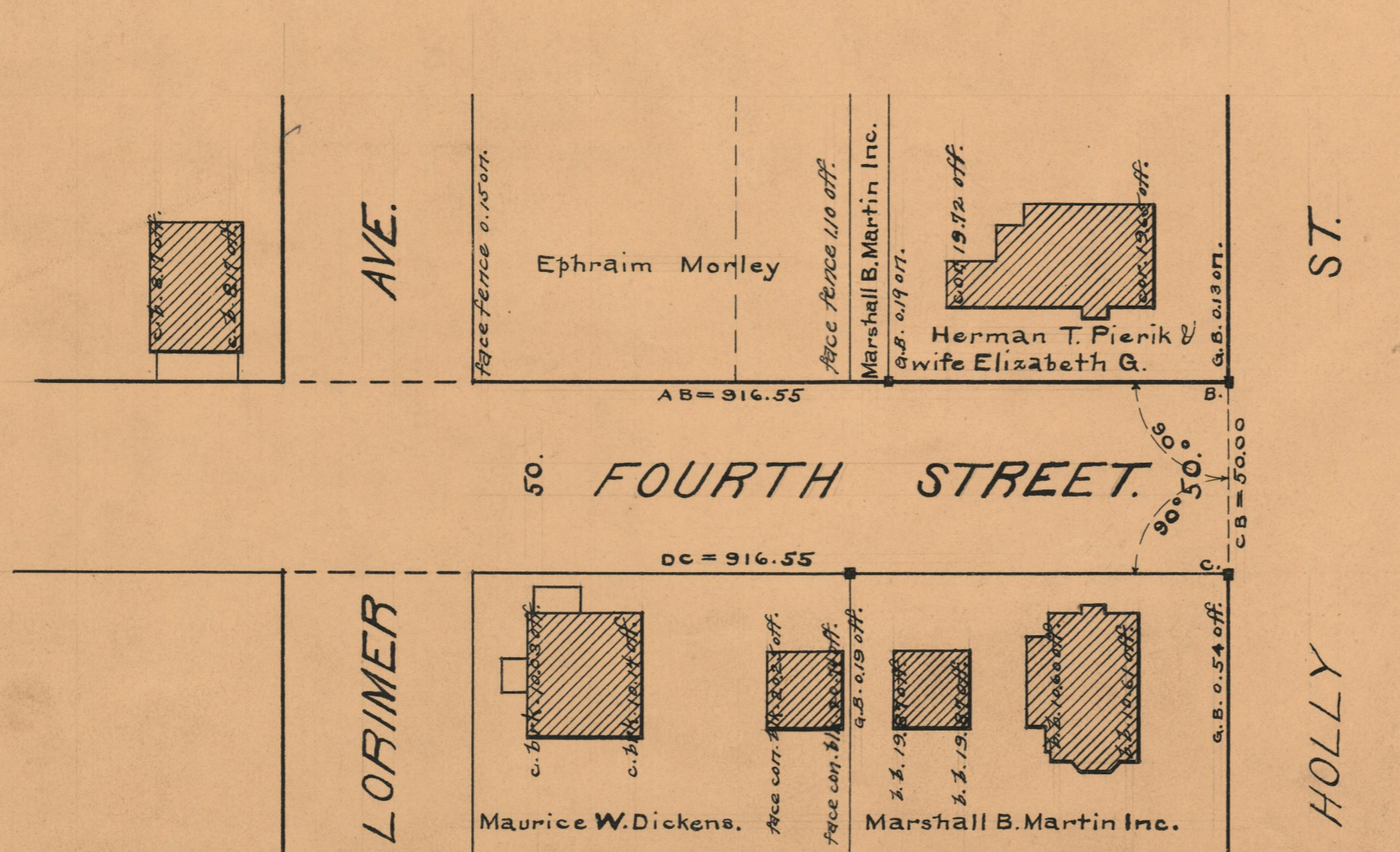
G.W.S. 2590-124.

PROVIDENCE, R.I.
CITY ENGINEER'S OFFICE

STREET LINE DEPT.

July 24, 1928.

050981



OFFICE No.	23972
DRAWER "	73
SHEET "	B-83