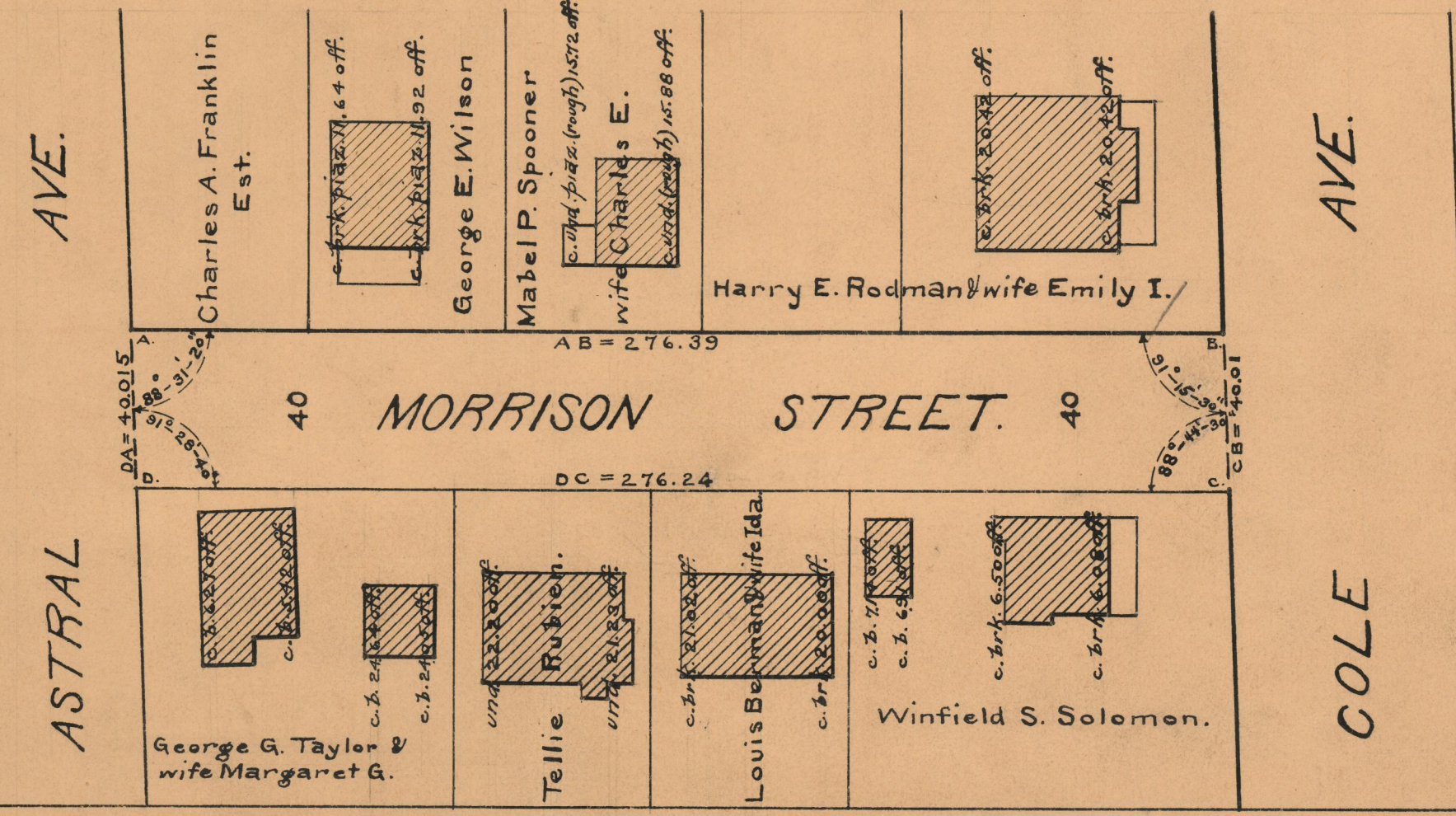


PROVIDENCE, R.I.
CITY ENGINEER'S OFFICE
STREET LINE DEPT.
July 24, 1928.
050979

PLAT OF MORRISON STREET

FROM COLE AVE. TO ASTRAL AVE.
SCALE 40 FEET PER INCH

Established as a Public Highway by the
Resolution of the Board of Aldermen
August 2, 1928



OFFICE No.	23970
DRAWER	73
SHEET	B-81