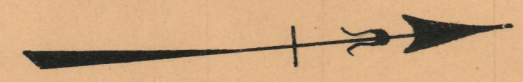


PROVIDENCE, R.I.
CITY ENGINEER'S OFFICE
STREET LINE DEPT.
July 24, 1928.

050978

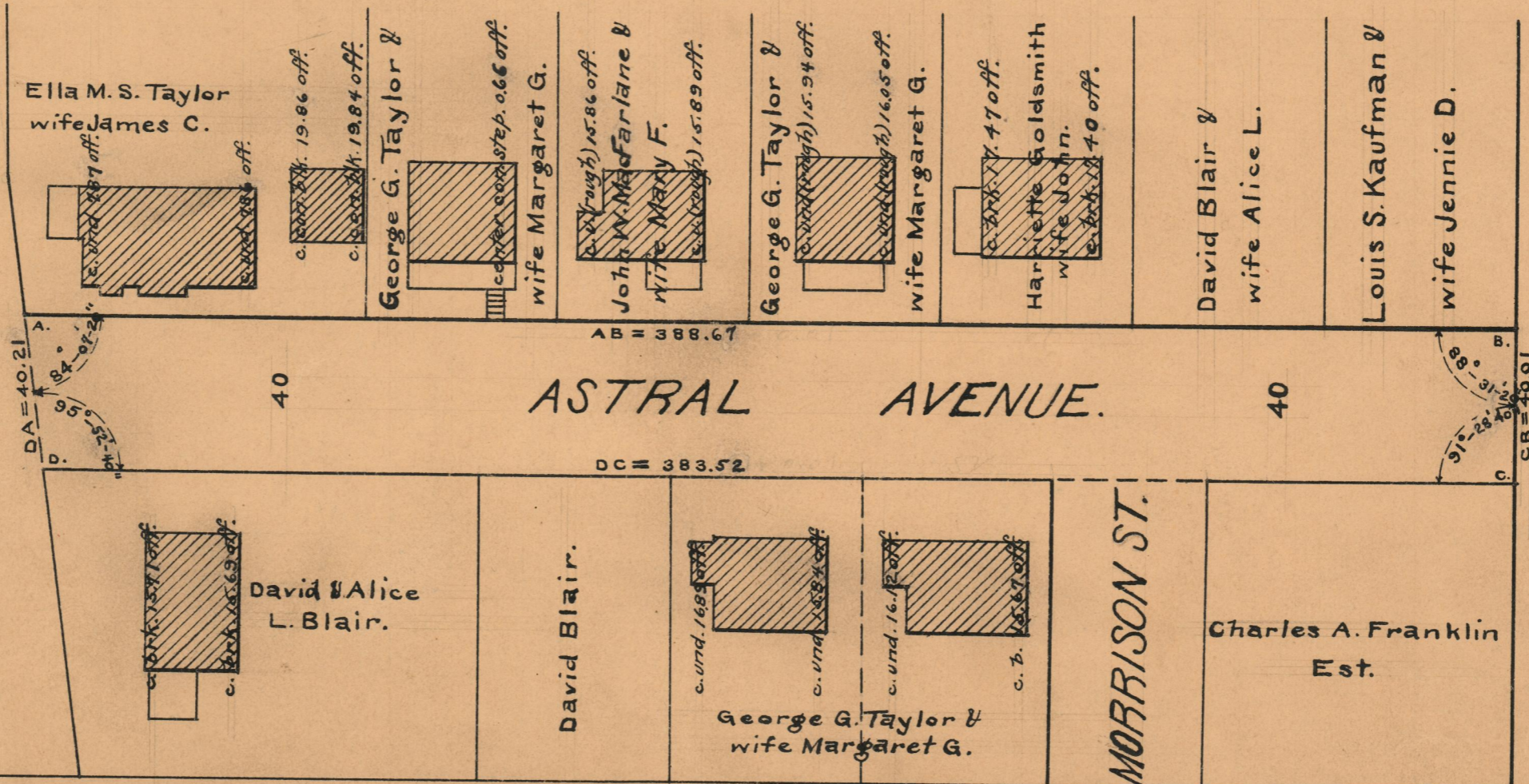
PLAT OF
ASTRAL AVENUE
FROM SESSIONS ST. TO ITS NORTHERLY TERMINATION
SCALE 40 FEET PER INCH

Declared and established a Public Highway
by the resolution of the Board of Aldermen
August 2, 1928



ST.

SESSIONS



OFFICE No. 23969
DRAWER " 73
SHEET " B-80