

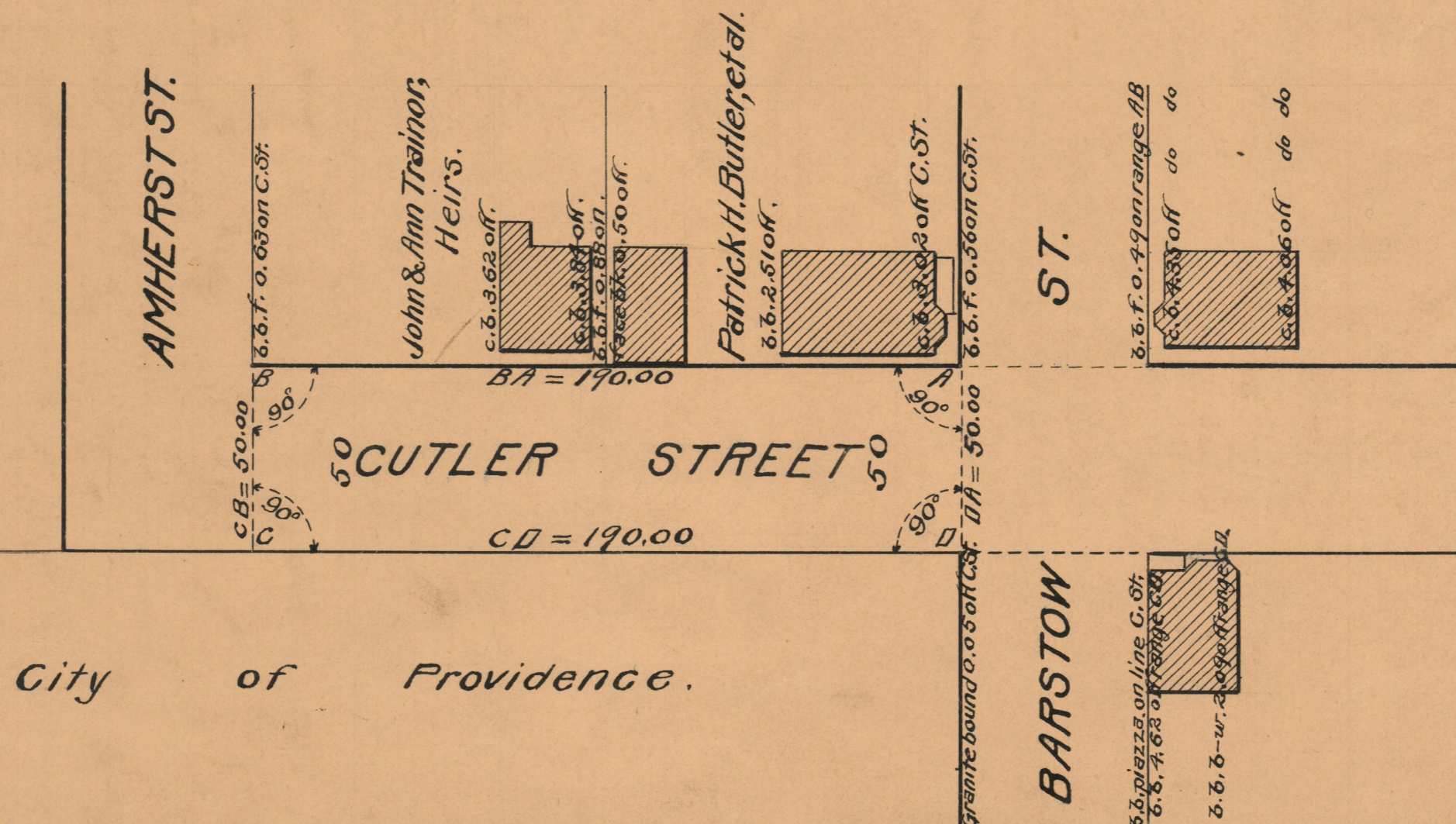
PLAT OF
CUTLER STREET

FROM BARSTOW ST. TO AMHERST ST.

SCALE 40 FEET PER INCH

Established as a Public Highway by the resolution
of the Board of Aldermen
August 2, 1928.

PROVIDENCE, R.I.
CITY ENGINEER'S OFFICE
STREET LINE DEPT.
July 21, 1928.
050954



City of Providence.

OFFICE No. 23960
DRAWER " 73
SHEET " B-78