

SHEET ONE

T. F. C. 2562-62-4

Note: The area declared a public highway is indicated by the letters AKLMNOBC DEFGHIJA.

PLAT OF
EMELINE STREET

FROM MORRIS AVE. TO TABER AVE.

IN TWO SHEETS

SCALE 40 FEET PER INCH

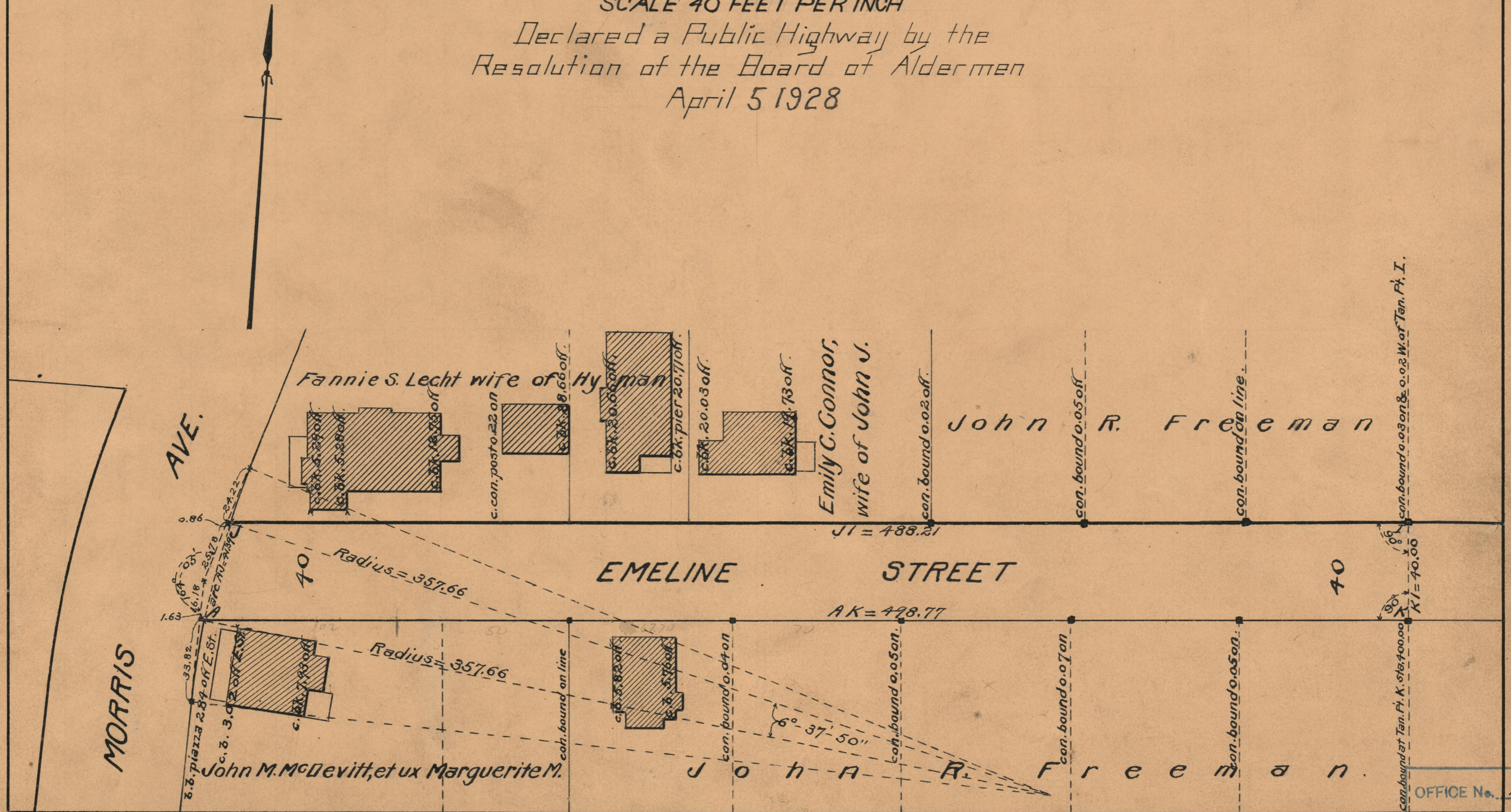
Declared a Public Highway by the
Resolution of the Board of Aldermen
April 5 1928

PROVIDENCE, R.I.
CITY ENGINEER'S OFFICE

STREET LINE DEPT.

July 16, 1928.

050792



con. bound 0.03 on & 0.02 W. of Tab. Pt. I.

OFFICE No. 23946
DRAWER " 73
SHEET " B-76