

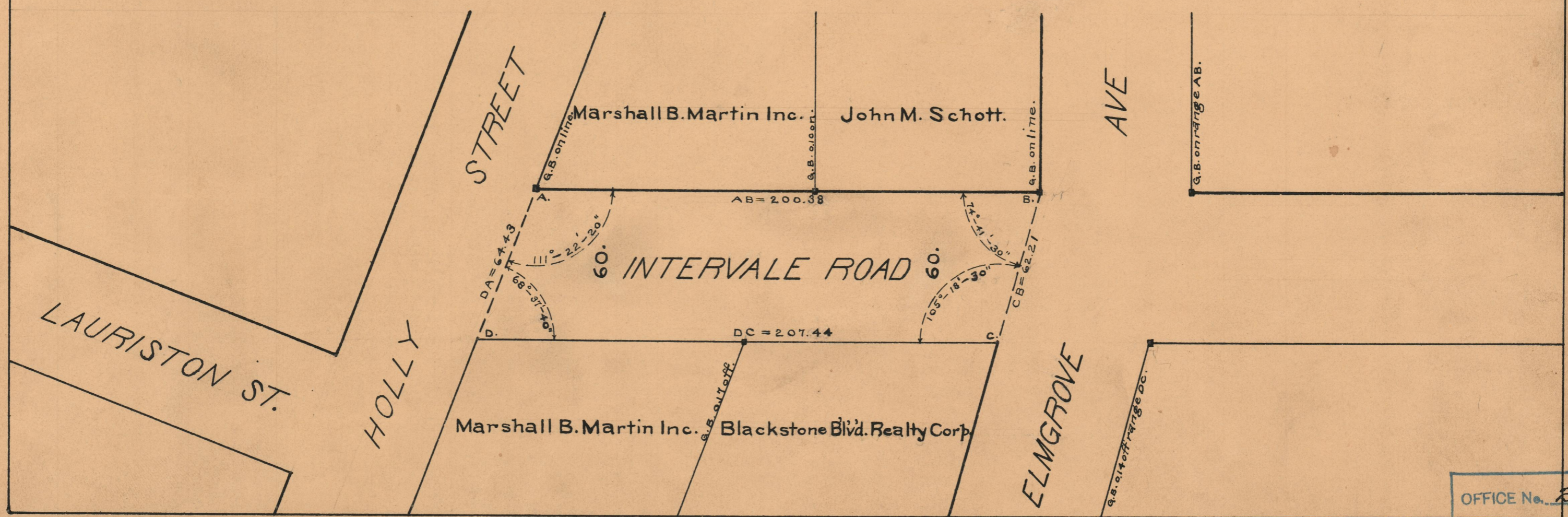
PROVIDENCE, R.I.
CITY ENGINEER'S OFFICE
STREET LINE DEPT.
Apr. 28, 1928.
050783

PLAT OF INTERVALE ROAD

FROM HOLLY ST. TO ELMGROVE AVE.

SCALE 40 FEET PER INCH

*Declared a Public Highway by resolution of the
Board of Aldermen
April 5, 1928*



OFFICE No.	23935
DRAWER "	73
SHEET "	B-75