

PROVIDENCE, R.I.
CITY ENGINEER'S OFFICE

STREET LINE DEPT.

Apr. 27, 1928.

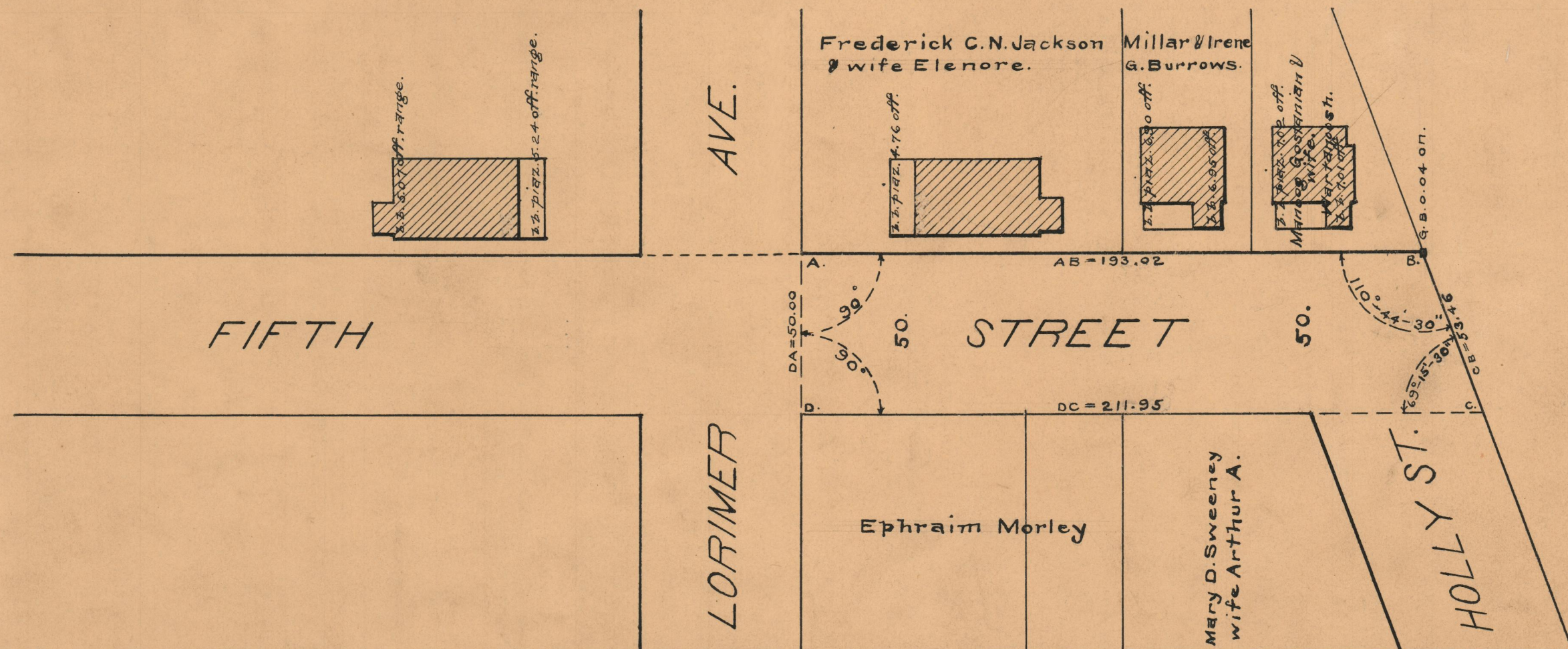
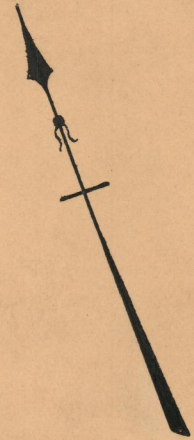
050780

PLAT OF FIFTH STREET

FROM LORIMER AVE. TO EASTERLY LINE OF HOLLY ST.

SCALE 40 FEET PER INCH

Declared and established as a Public Highway
by resolution of the Board of Aldermen
May 17, 1928.



OFFICE No. 23932
 DRAWER 73
 SHEET B-74