

Scale 50

G.W.S. 2547-10.

PLAT OF CLEMATIS STREET

FROM CHALKSTONE AVE. TO MOLLOY ST.

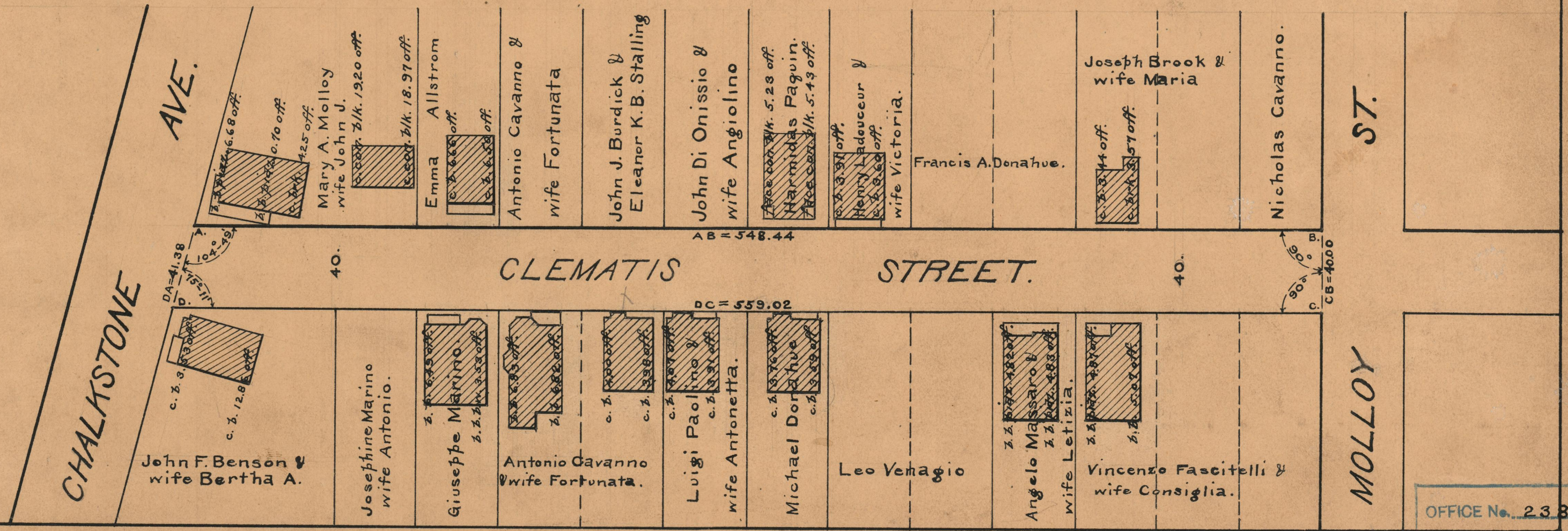
SCALE 50 FEET PER INCH

Declared and established as a Public Highway
by resolution of the Board of Aldermen
July 5, 1928

PROVIDENCE, R.I.
CITY ENGINEER'S OFFICE
STREET LINE DEPT.

July 3, 1928

050688



OFFICE No. 23327
 DRAWER " 73
 SHEET " B-73.