

PLAT OF CHAPMAN STREET

FROM BROAD ST. TO EDDY ST.

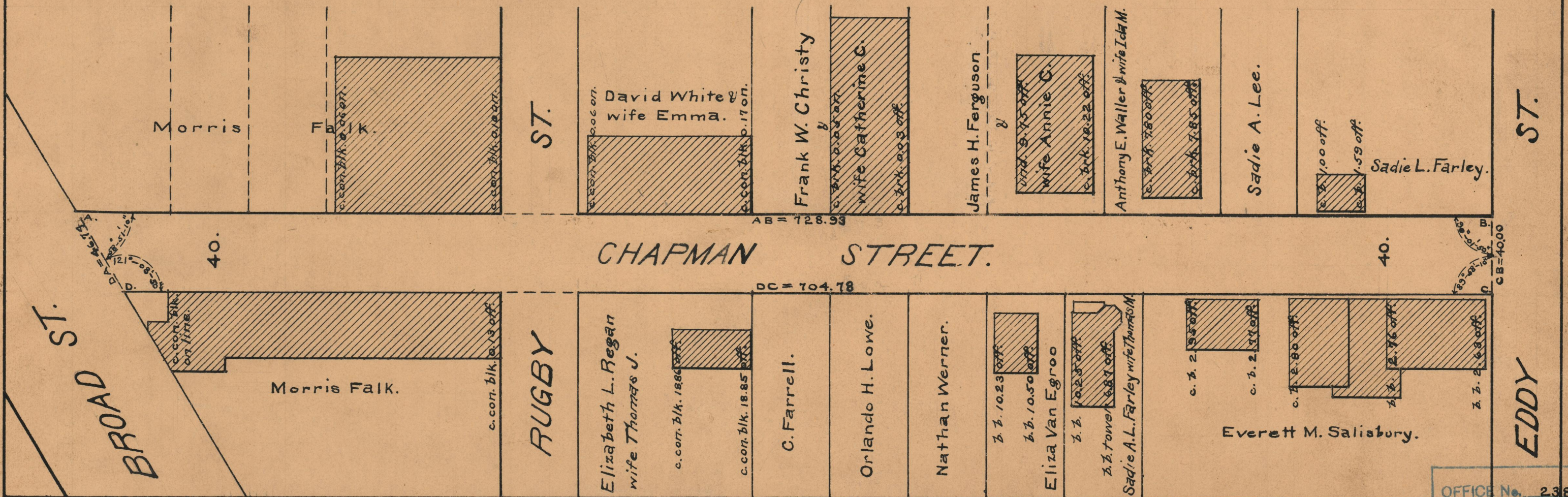
SCALE 50 FEET PER INCH

Declared and established as a Public Highway
by resolution of the Board of Aldermen
July 5, 1928.

PROVIDENCE, R.I.
CITY ENGINEER'S OFFICE
STREET LINE DEPT.

July 3, 1928.

050687



OFFICE No. 23826
 DRAWER # 73
 SHEET # B-72