

SHEET TWO

T. F. C. 2213-106

PLAT OF EDGEHILL ROAD

FROM CAMP ST. TO SUMMIT AVE.

IN TWO SHEETS

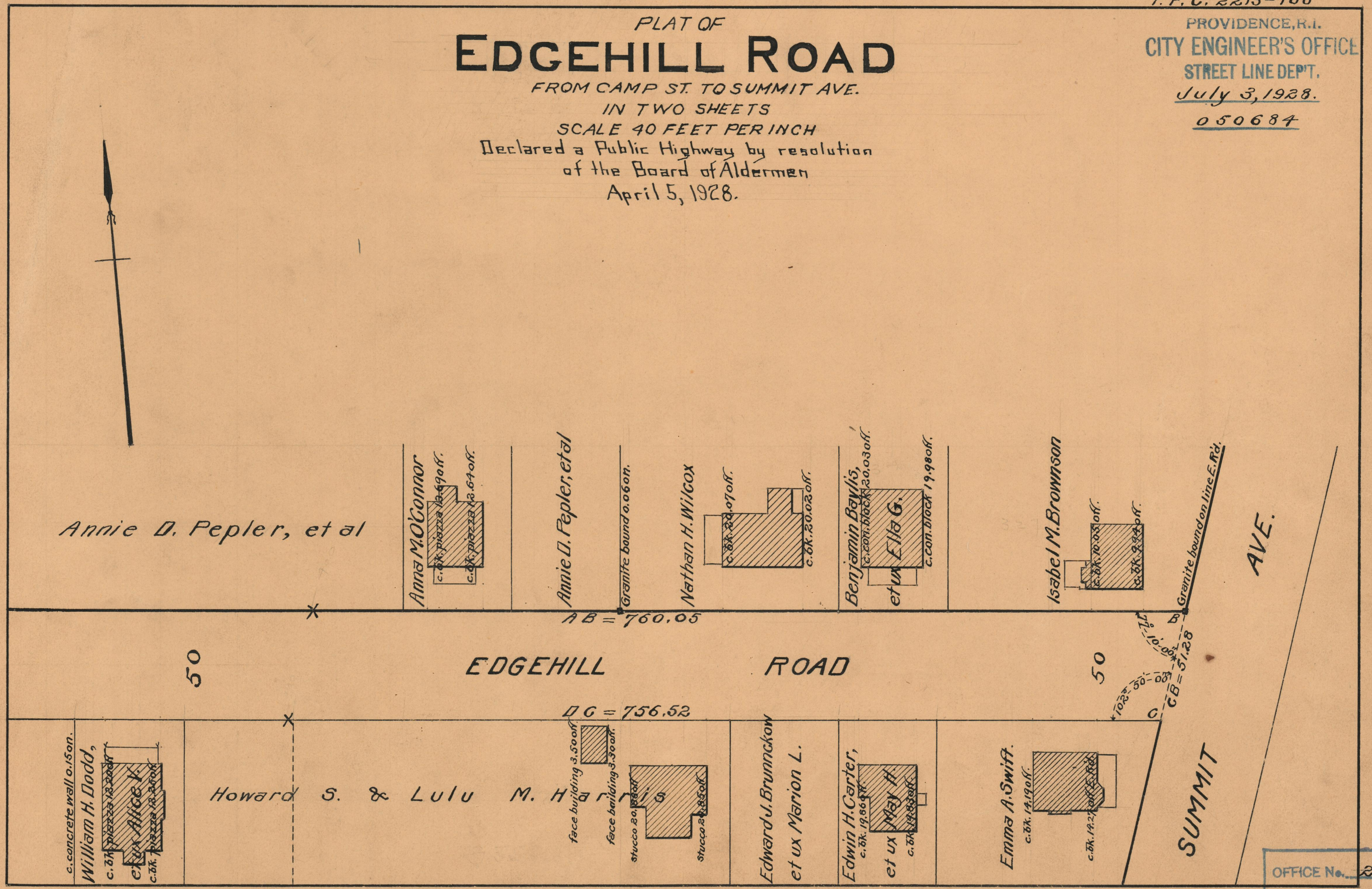
SCALE 40 FEET PER INCH

Declared a Public Highway by resolution
of the Board of Aldermen
April 5, 1928.

PROVIDENCE, R.I.
CITY ENGINEER'S OFFICE
STREET LINE DEPT.

July 3, 1928.

050684



AVE.

SUMMIT

OFFICE No. 23823
DRAWER " 73
SHEET " B-69