

SHEET ONE

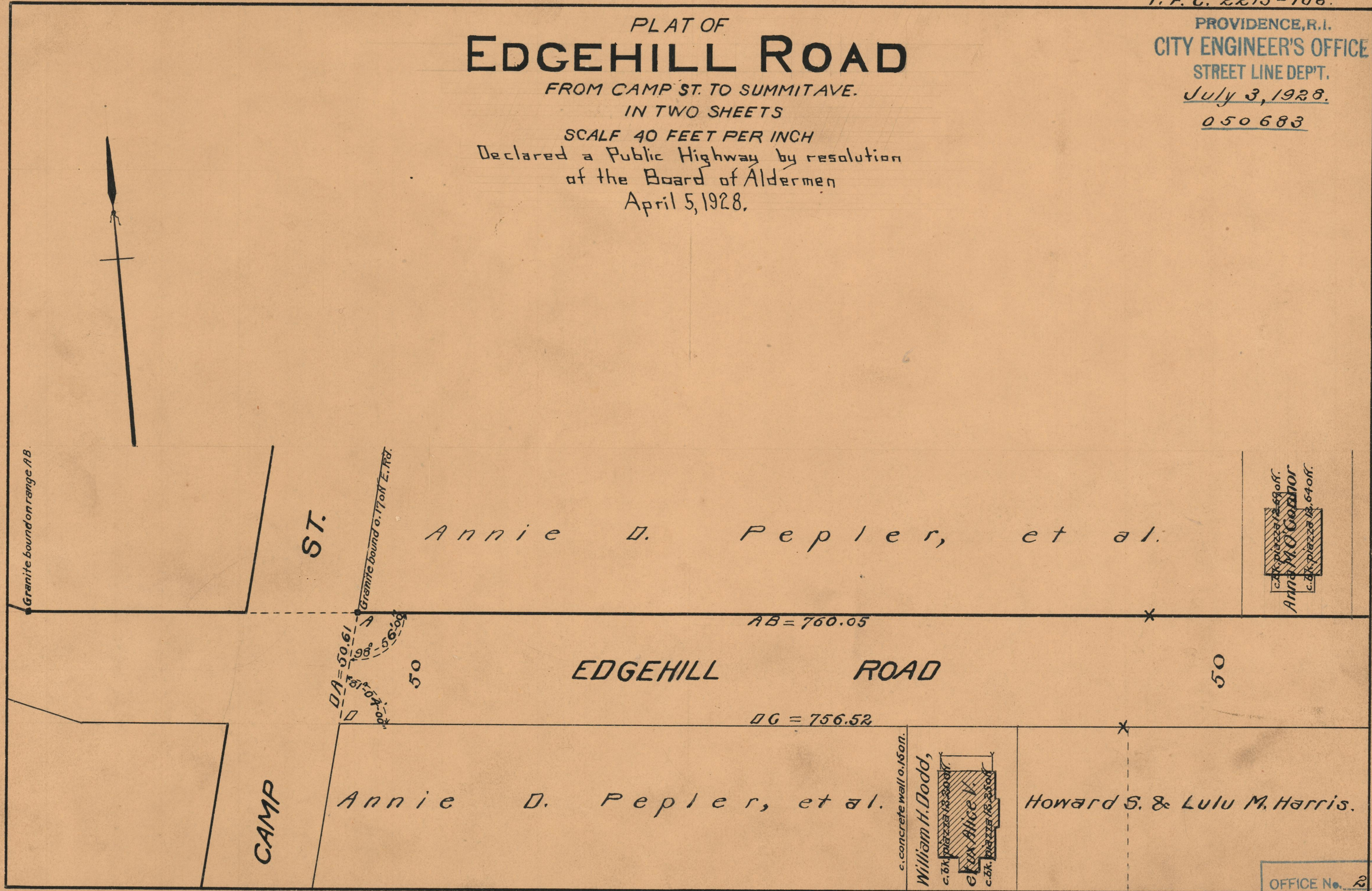
T. F. G. 2213-106.

PLAT OF EDGEHILL ROAD

FROM CAMP ST. TO SUMMIT AVE.
IN TWO SHEETS

SCALE 40 FEET PER INCH
Declared a Public Highway by resolution
of the Board of Aldermen
April 5, 1928.

PROVIDENCE, R.I.
CITY ENGINEER'S OFFICE
STREET LINE DEPT.
July 3, 1928.
050683



c. 1/2" piazza 12.64 off.
Annie M. O'Connor
c. 1/2" piazza 12.64 off.

c. concrete wall o. 150 ft.
William H. Dodd,
c. 1/2" piazza 12.20 off.
Alice V.
c. 1/2" piazza 12.20 off.

OFFICE No. 23822
DRAWER " 73
SHEET " B-68