

PROVIDENCE, R.I.  
CITY ENGINEER'S OFFICE  
STREET LINE DEPT.

June 30, 1928

050679

PLAT OF  
**KEPLER STREET**  
FROM ACADEMY AVE EASTERLY TO ITS TERMINATION

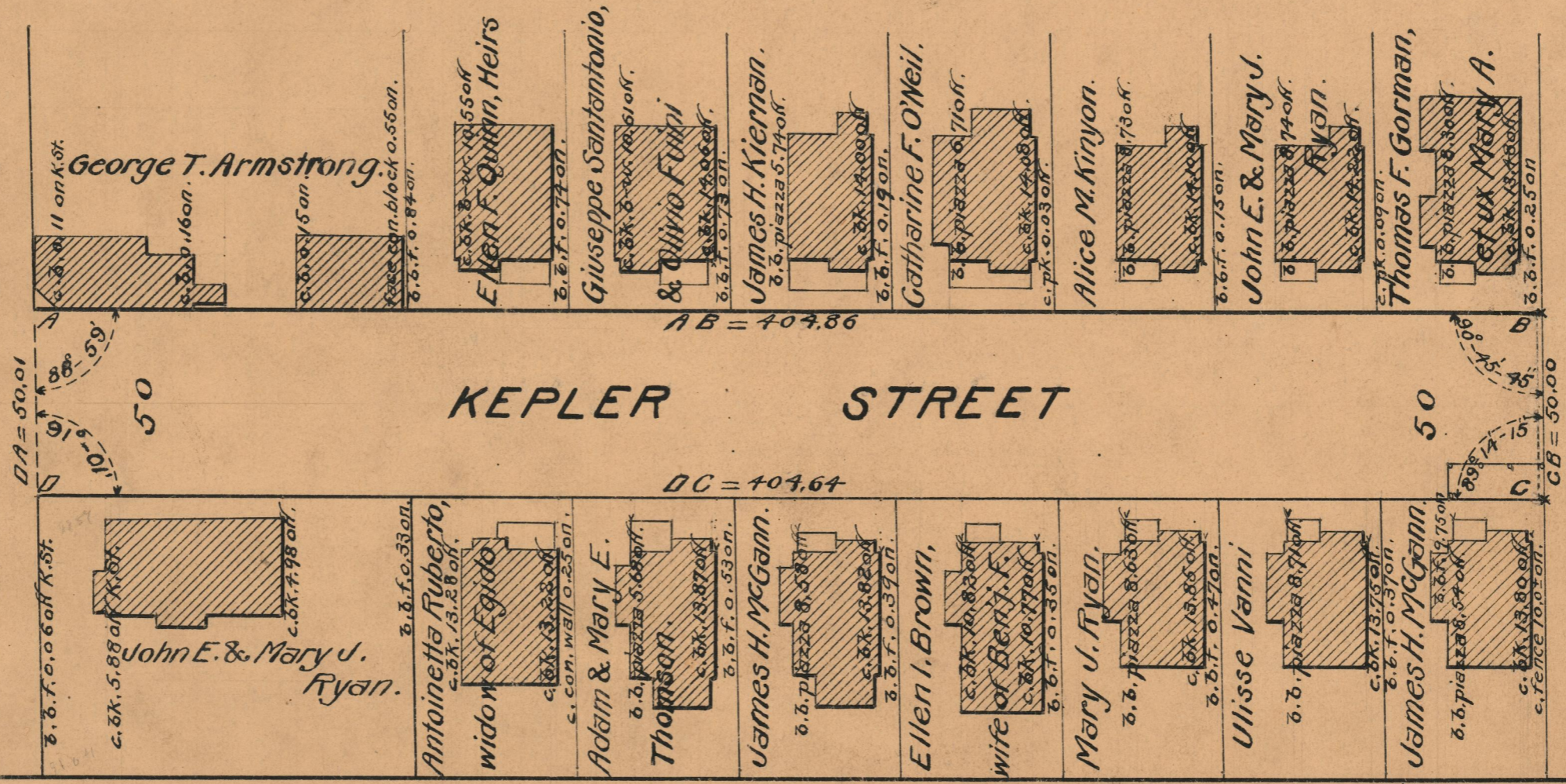
SCALE 40 FEET PER INCH

Established as a Public Highway by the resolution  
of the Board of Aldermen  
July 5, 1928.



ACADEMY AVE.

ACADEMY AVE.



|            |       |
|------------|-------|
| OFFICE No. | 33819 |
| DRAWN      | 73    |
| SHEET      | B-67  |