

PROVIDENCE, R.I.
CITY ENGINEER'S OFFICE
STREET LINE DEPT.

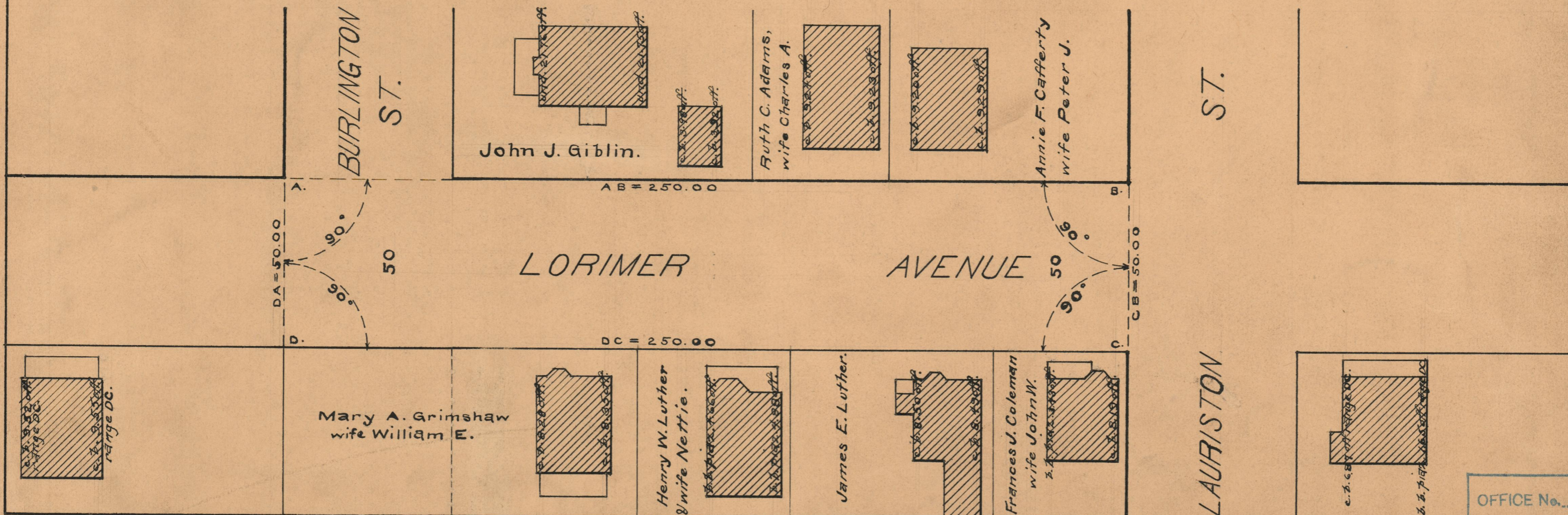
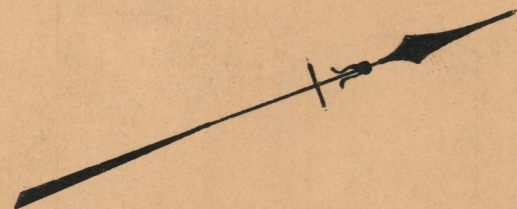
June 12, 1928.

050652

PLAT OF
LORIMER AVENUE
FROM LAURISTON ST. TO SOUTH LINE OF BURLINGTON ST.

SCALE 30 FEET PER INCH

Declared and established as a Public Highway by
the resolution of the Board of Aldermen
June 21, 1928



OFFICE No.	23806
DRAWER "	73
SHEET "	B-66