

PLAT OF MONTROSE STREET

FROM ERASTUS ST. TO MT. PLEASANT AVE.

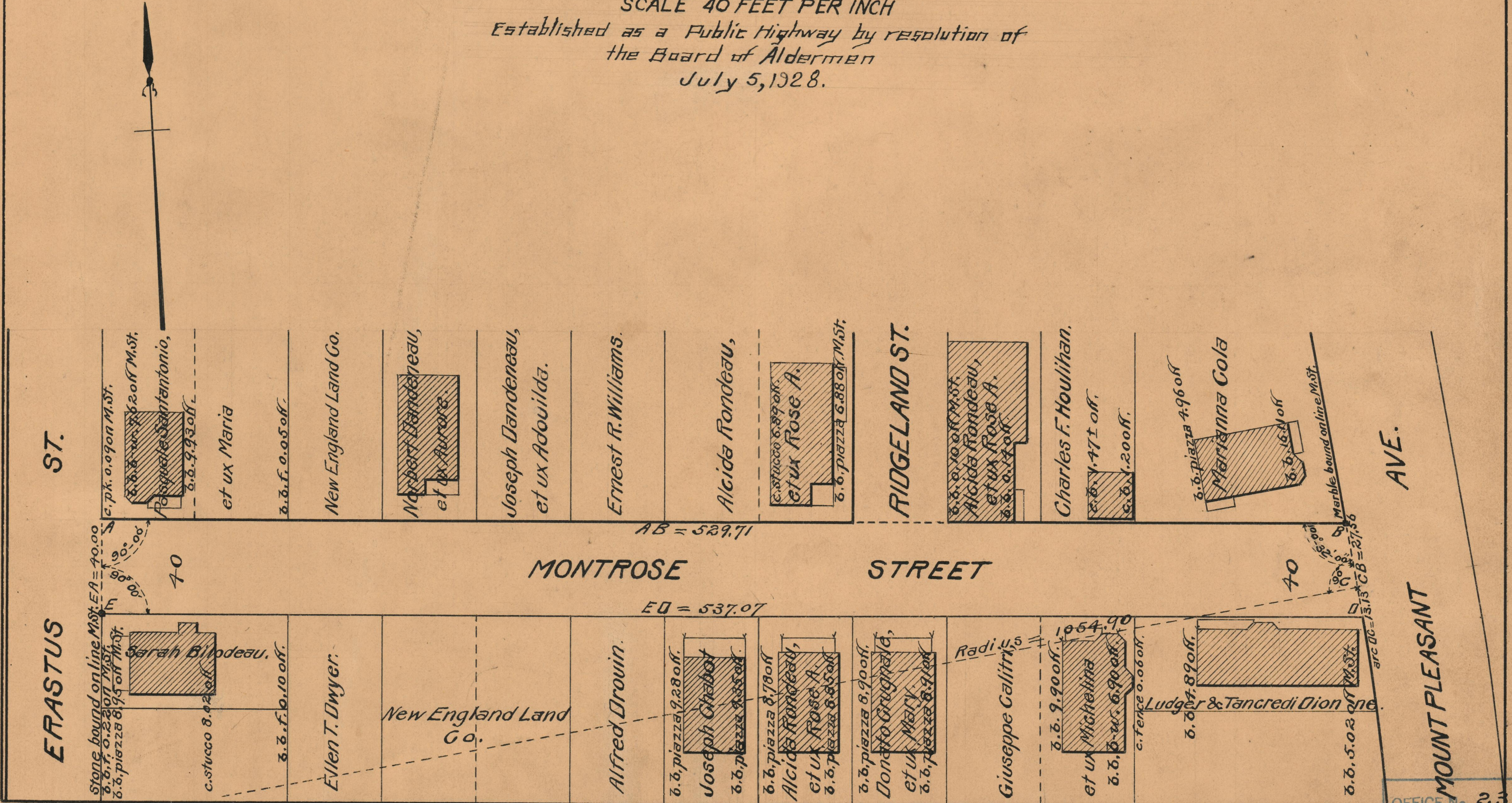
SCALE 40 FEET PER INCH

Established as a Public Highway by resolution of
the Board of Aldermen
July 5, 1928.

L. P. R. 2646-6-7

PROVIDENCE, R. I.
CITY ENGINEER'S OFFICE
STREET LINE DEPT.
June 11, 1928.

050646



ST.

ERASTUS

AVE.

MOUNT PLEASANT

AB = 529.71

ED = 537.07

Radius = 1054.90

arc DC = 3.13 CB = 27.56

OFFICE No. 23804
DRAWER " 73
SHEET " B-64

ENG