

PROVIDENCE, R.I.  
CITY ENGINEER'S OFFICE  
STREET LINE DEPT.

May 9, 1928.

050644.

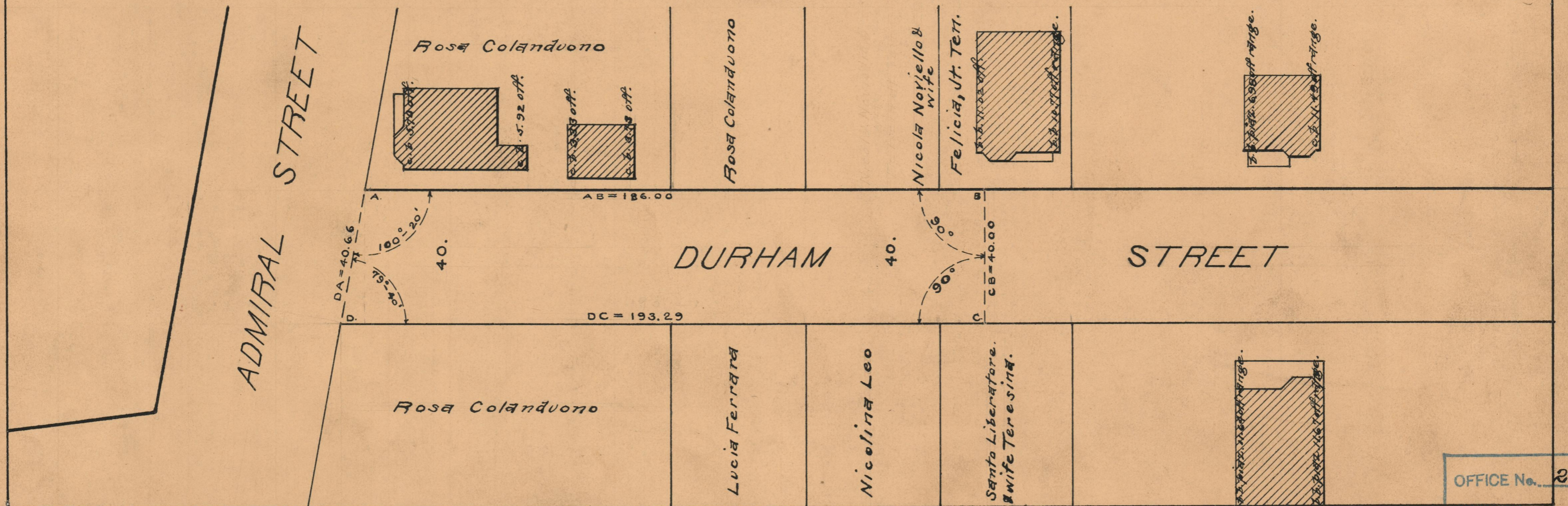
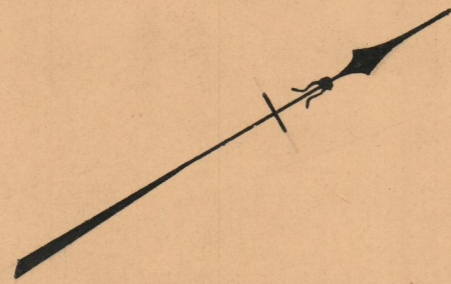
# PLAT OF DURHAM STREET

FROM ADMIRAL ST. 186 FEET NORTHERLY

SCALE 30 FEET PER INCH

Established as a Public Highway by resolution  
of the Board of Aldermen  
May 17, 1928.

186.00  
193.29  
2)379.29  
189.64



OFFICE No.	23802
DRAWER	73
SHEET	B-62