

PROVIDENCE, R.I.
CITY ENGINEER'S OFFICE
STREET LINE DEPT.

May 17, 1928.

050643.

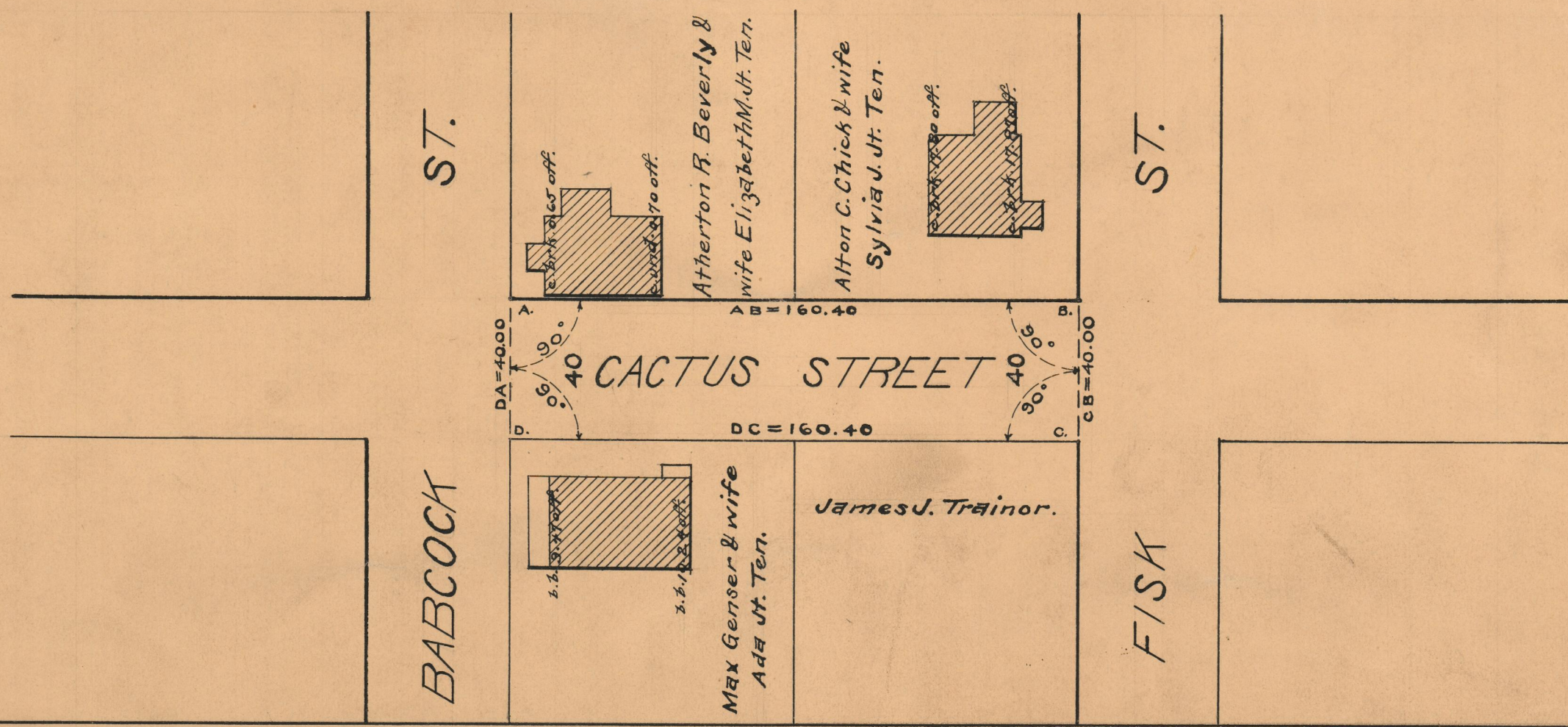
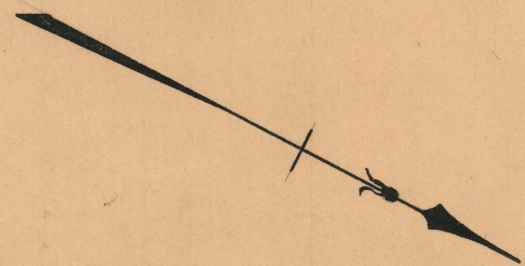
PLAT OF CACTUS STREET

FROM FISK ST. TO BABCOCK ST.

SCALE 40 FEET PER INCH

Established as a Public Highway by resolution
of the Board of Aldermen

May 17, 1928.



OFFICE No.	33801
DRAWER	73
SHEET	B-61