

SHEET TWO

G.W.S. 2445-136,137. 2590-71.

# PLAT OF LAURISTON STREET

FROM HOLLY ST. TO HOPE ST.

IN TWO SHEETS

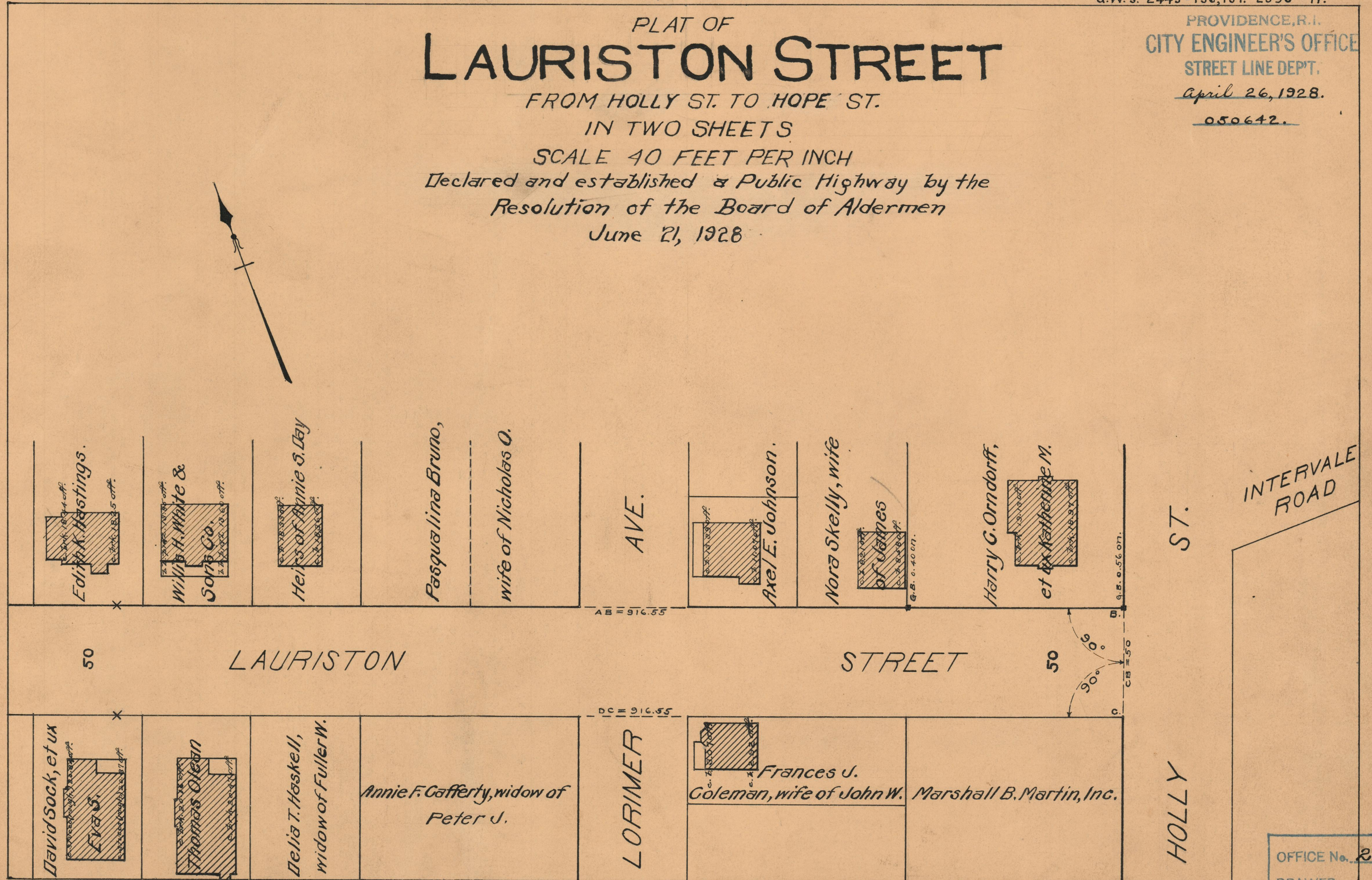
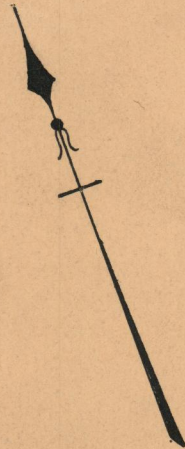
SCALE 40 FEET PER INCH

Declared and established a Public Highway by the  
Resolution of the Board of Aldermen  
June 21, 1928

PROVIDENCE, R.I.  
CITY ENGINEER'S OFFICE  
STREET LINE DEPT.

April 26, 1928.

050642.



OFFICE No.	23800
DRAWER "	73
SHEET "	B-60