

SHEET ONE

PLAT OF
LAURISTON STREET

FROM HOLLY ST. TO HOPE ST.

IN TWO SHEETS

SCALE 40 FEET PER INCH

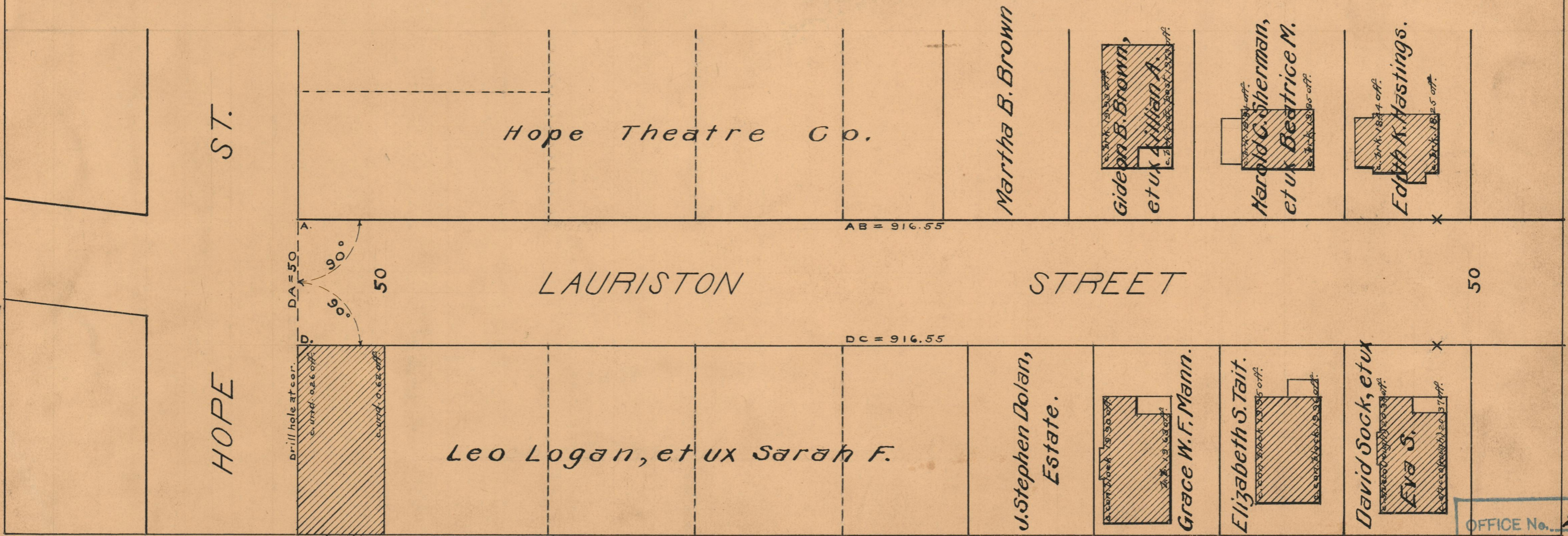
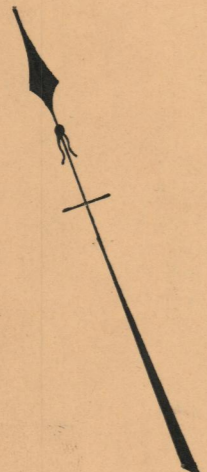
*Declared and established a Public Highway by the
Resolution of the Board of Aldermen
June 21, 1928*

G. W. S. 2445-136, 137.

PROVIDENCE, R. I.
CITY ENGINEER'S OFFICE
STREET LINE DEPT.

April 26, 1928.

050640.



OFFICE No.	23799
DRAWER	73
SHEET	B-59