

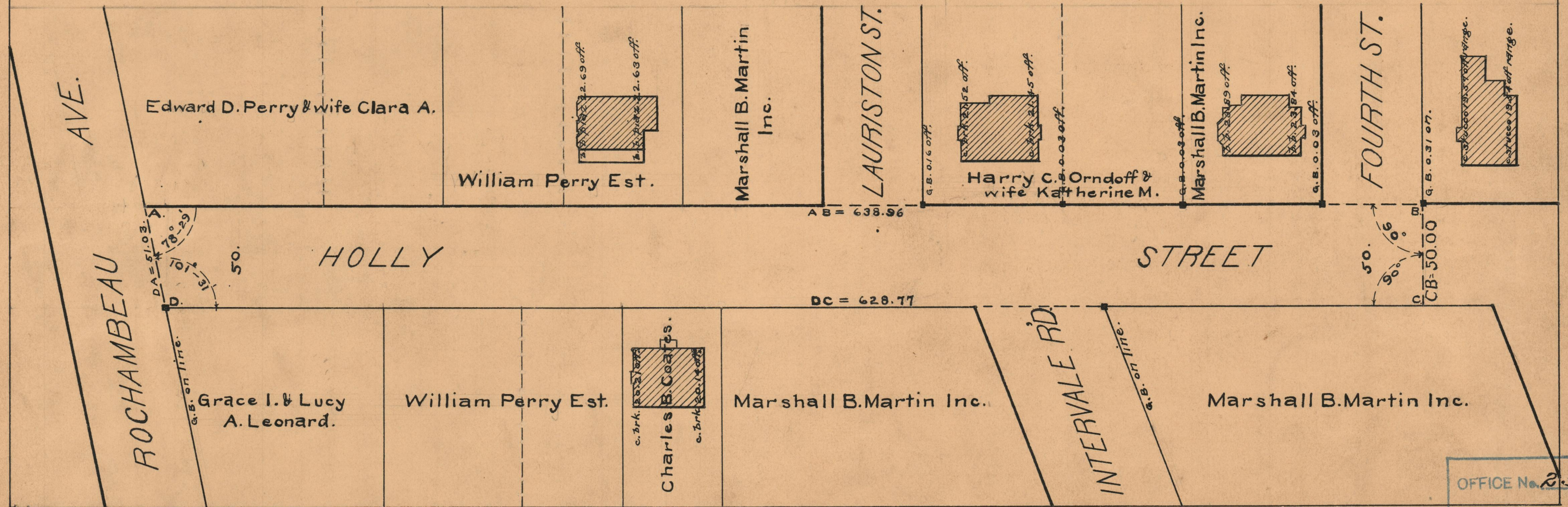
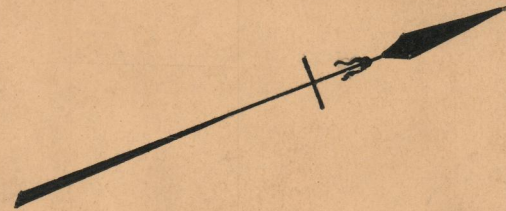
PROVIDENCE, R.I.
CITY ENGINEER'S OFFICE
STREET LINE DEPT.

May 24, 1928.

050639.

PLAT OF
HOLLY STREET
FROM ROCHAMBEAU AVE. TO NORTHERLY LINE OF FOURTH ST.

SCALE 50 FEET PER INCH
Established as a Public Highway by resolution
of the Board of Aldermen
May 17, 1928.



OFFICE No.	23798
DRAWER	73
SHEET	B-58