

PROVIDENCE, R.I.
CITY ENGINEER'S OFFICE
STREET LINE DEPT.

April 28, 1928.

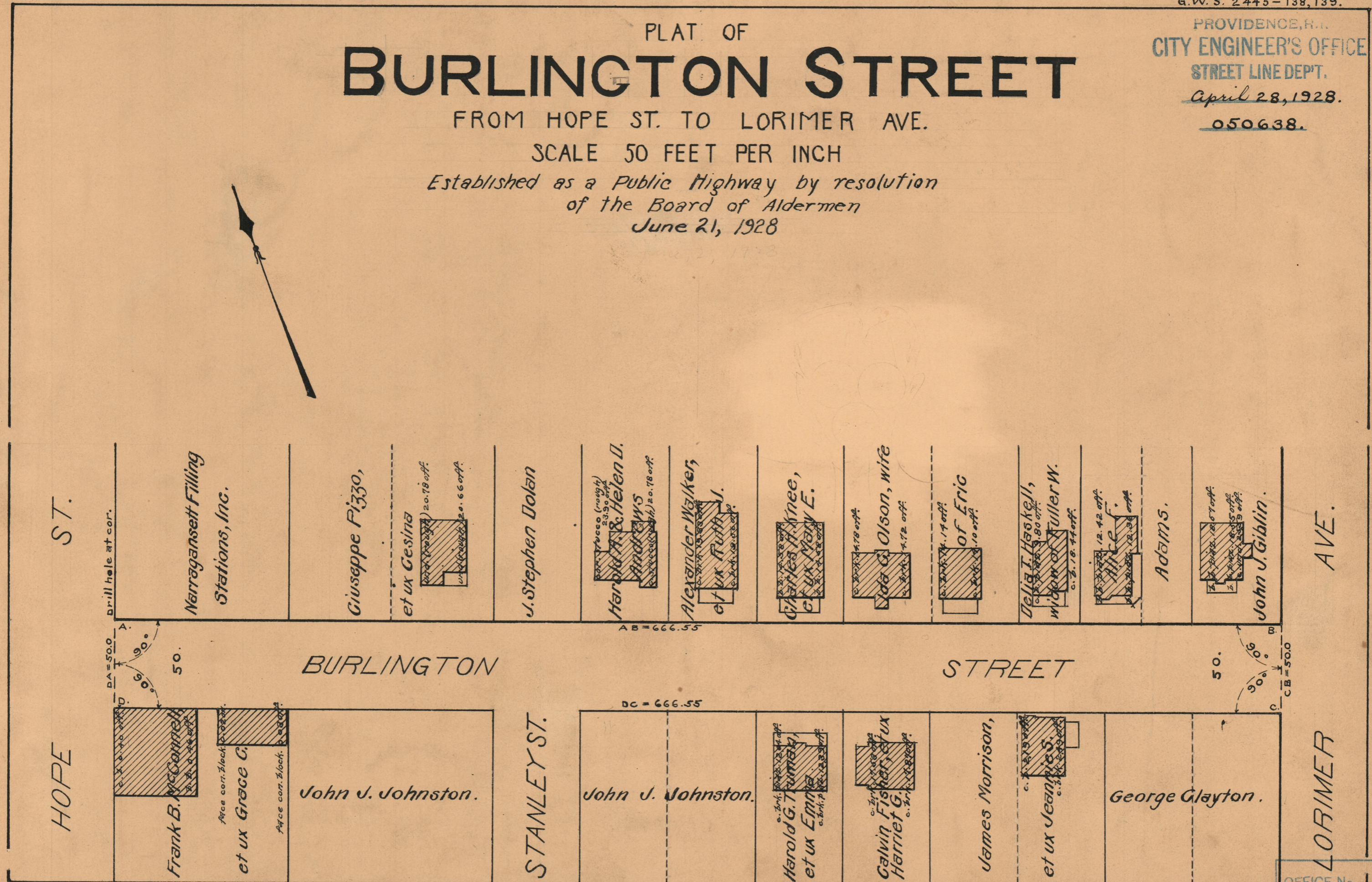
050638.

PLAT OF BURLINGTON STREET

FROM HOPE ST. TO LORIMER AVE.

SCALE 50 FEET PER INCH

Established as a Public Highway by resolution
of the Board of Aldermen
June 21, 1928



OFFICE No. 123797
 DRAWER, 73
 SHEET B-57