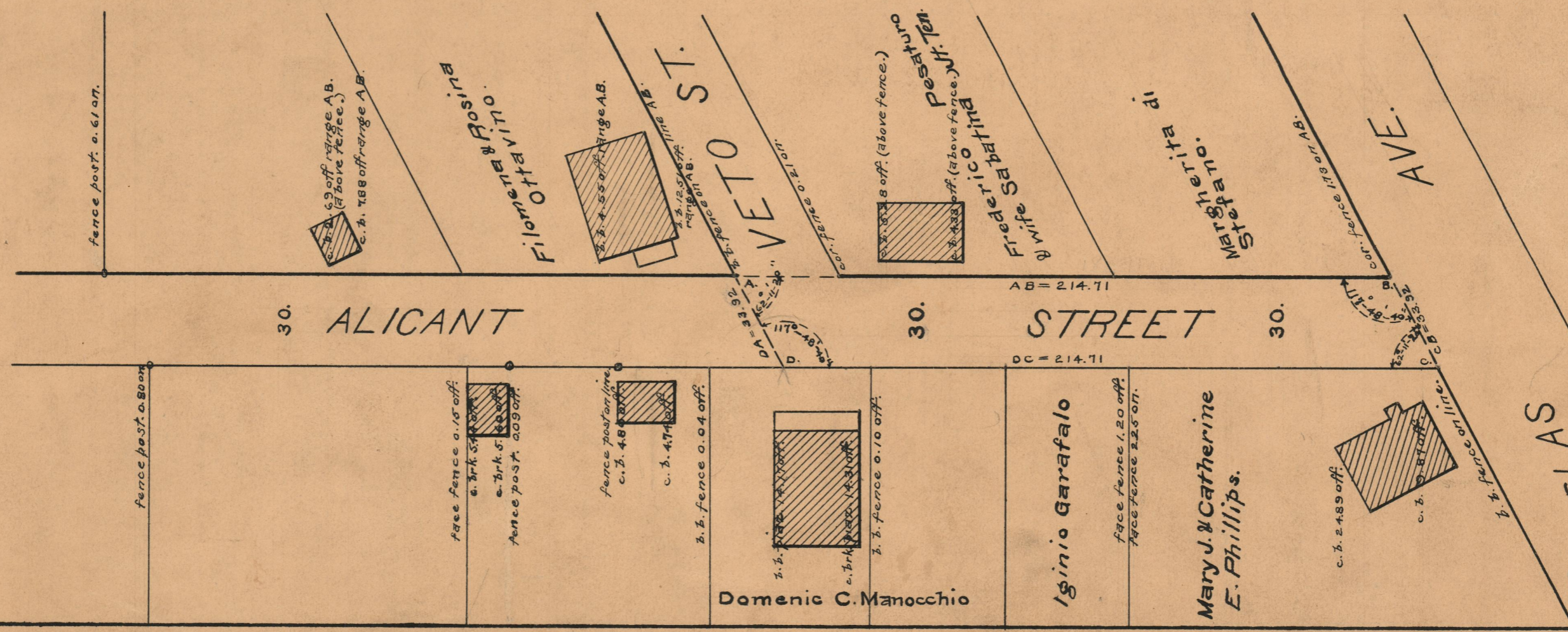


PROVIDENCE, R.I.
CITY ENGINEER'S OFFICE
STREET LINE DEPT.

May 31, 1928.
050637.

PLAT OF
ALICANT STREET
FROM DOUGLAS AVE. TO WEST LINE OF VETO STREET
SCALE 40 FEET PER INCH

Declared and established a Public Highway
By resolution of the Board of Aldermen
May 17, 1928



OFFICE No	23796
DRAWER	73
SHEET	B-56