

PLAT OF LORING AVENUE

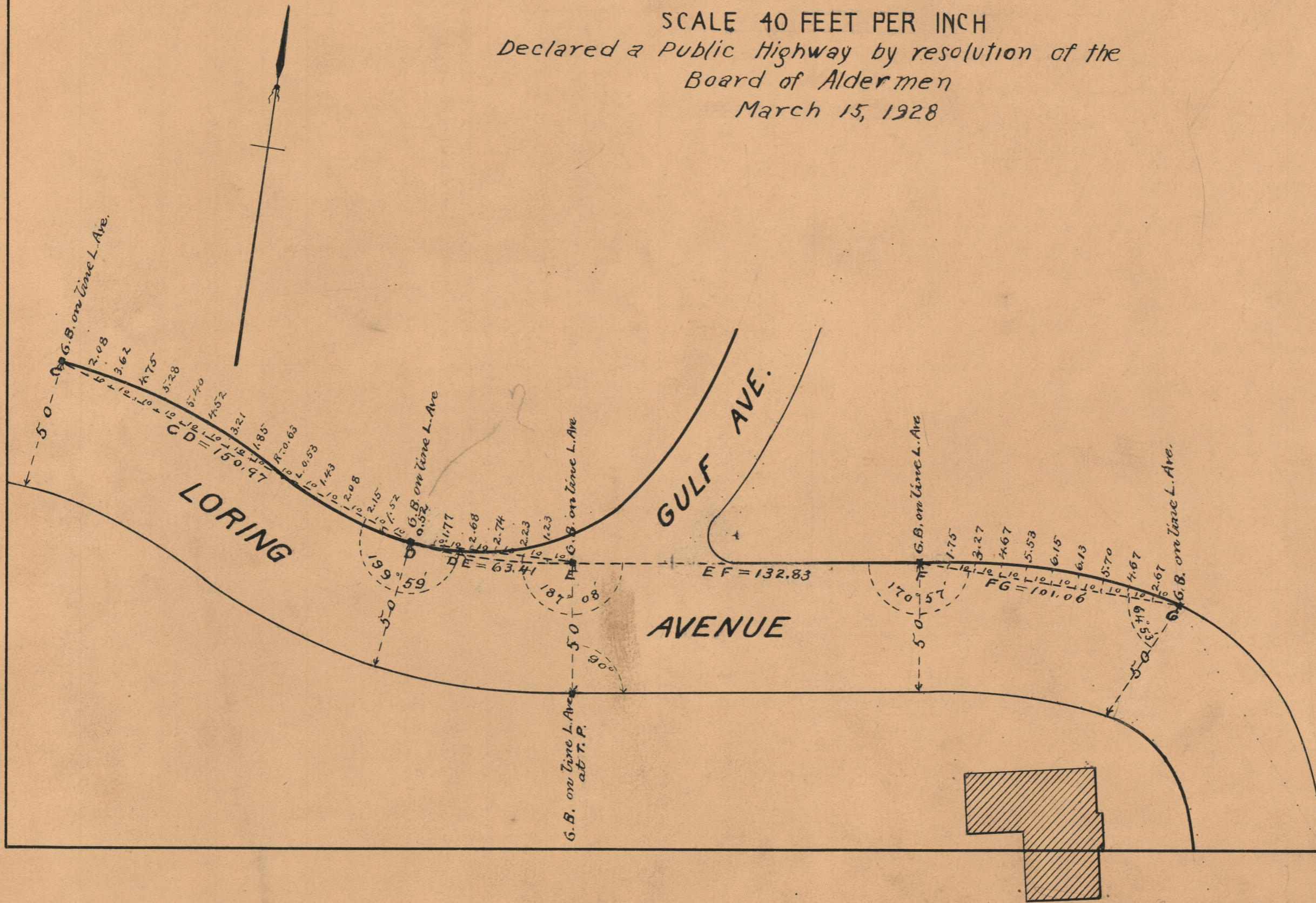
FROM GROTTO AVE TO THE PORTION ALREADY RECEIVED
IN TWO SHEETS

SCALE 40 FEET PER INCH

*Declared a Public Highway by resolution of the
Board of Aldermen
March 15, 1928*

PROVIDENCE, R.I.
CITY ENGINEER'S OFFICE
STREET LINE DEPT.
June 11, 1928.

050636



OFFICE No.	23795
DRAWER "	73
SHEET "	B-55