

PROVIDENCE, R.I.
CITY ENGINEER'S OFFICE
STREET LINE DEPT.

May 17, 1928.

050634

PLAT OF ROBINSON STREET

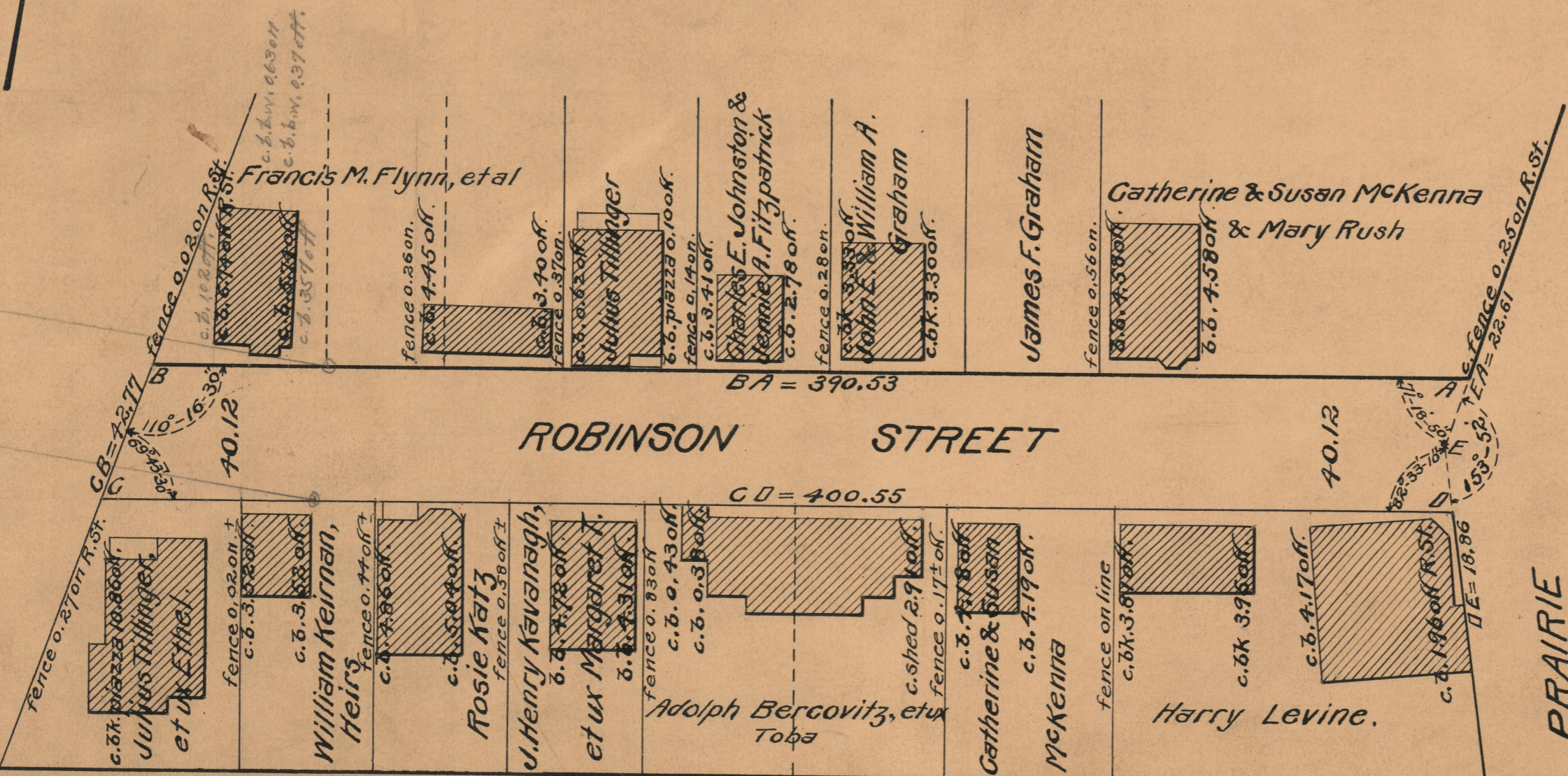
FROM PRAIRIE AVE TO ITS WESTERLY TERMINATION

SCALE 40 FEET PER INCH
Established as a Public Highway by Resolution
of the Board of Aldermen
May 17, 1928



390.53
52 05
338.48

TAYLOR ST.



OFFICE No.	23793
DRAWER	73
SHEET	B-53